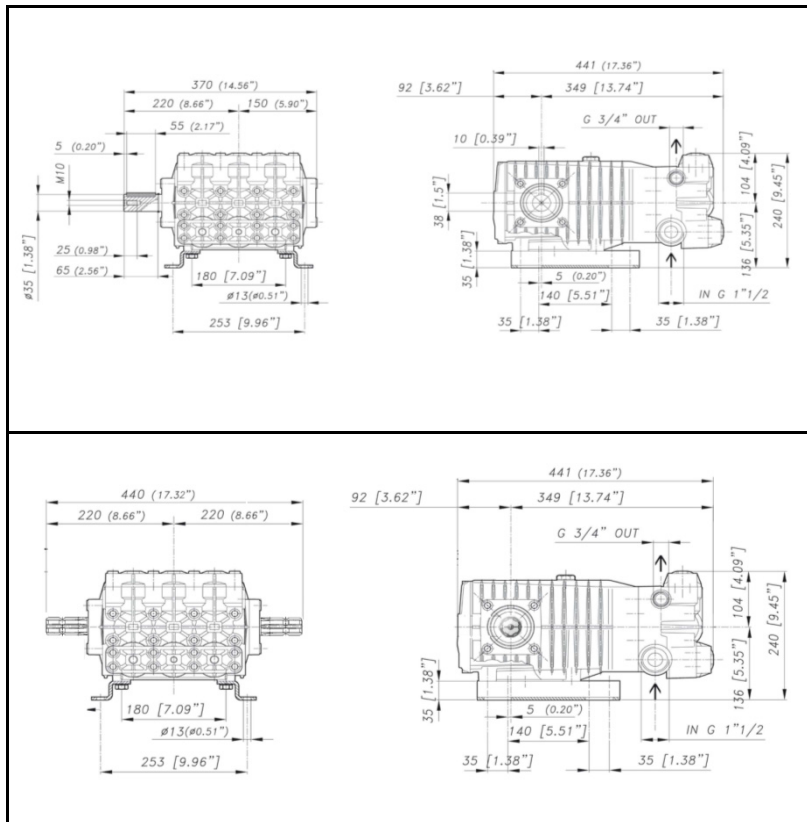
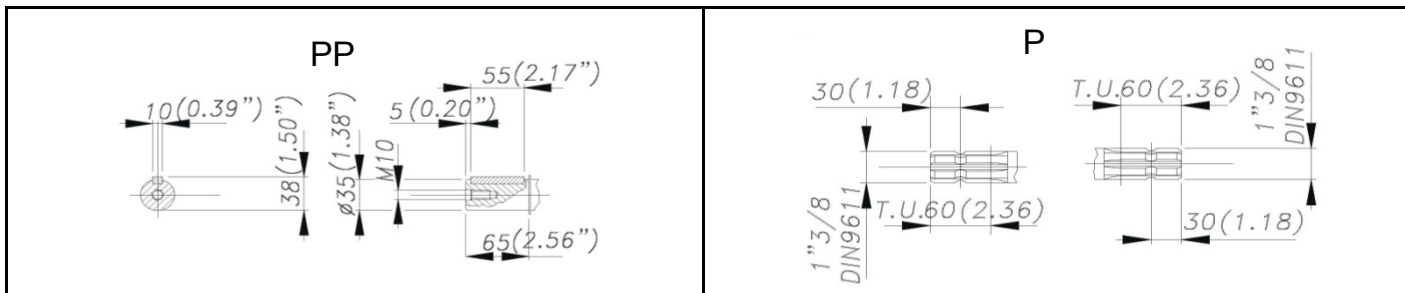




DIMENSIONI D'INGOMBRO - OVERALL DIMENSIONS



ALBERO POMPA - PUMP SHAFT



COPPIA DI SERRAGGIO - TORQUE CHART

CODICE - CODE	Q.TY	POS	N-m	Lbr.ft
86.3910.00.2	16	4	68	50,2
86.4120.00.2	8	5	68	50,2
86.3703.00.2	4	28	68	50,2
86.3696.00.2	8	32	40	29,6
86.2216.00.2	10	43	10	7,4
86.3439.00.2	6	44	40	29,5
86.4091.00.2	3	63	50 (LOXEAL 55-14)	36,9 (LOXEAL 55-14)
84.3898.00.2	3	62	LOXEAL 55-14	LOXEAL 55-14

Tolleranza di serraggio: 0/-10%
Tolerance on torque value: 0/-10%

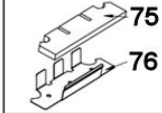
INFORMAZIONI UTILI
USEFUL INFORMATION

LUBRIFICANTE - LUBRICANT:
OLIO MOTORE O SEMIIDRAULICO SAE 30
MOTOR OIL OR SEMI-HYDRAULIC OIL SAE 30

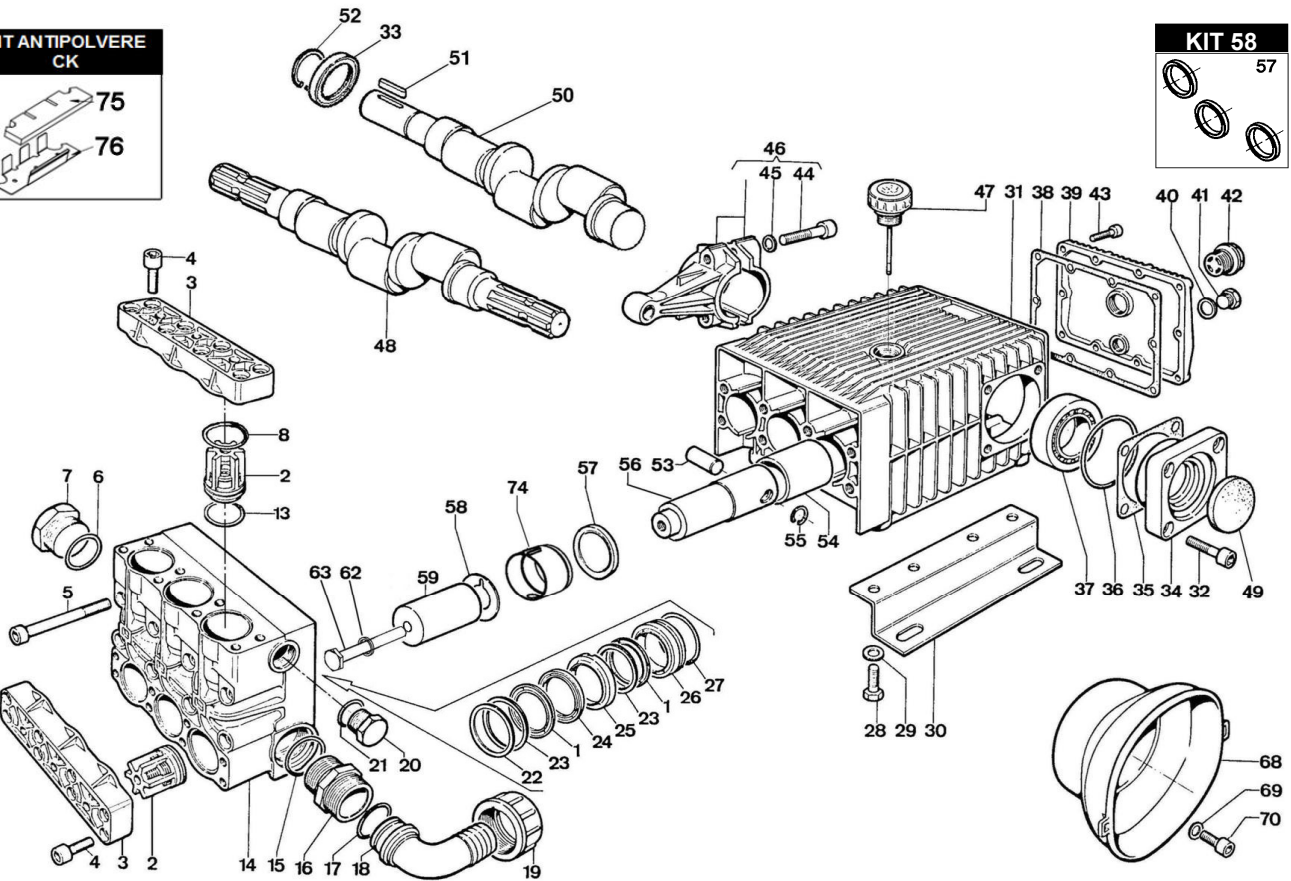
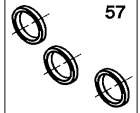


CKA 73-110-120 P - CKA 73-90-110-115-120 PP

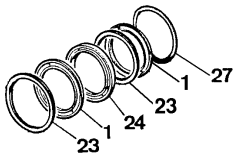
KIT ANTIPOLVERE CK



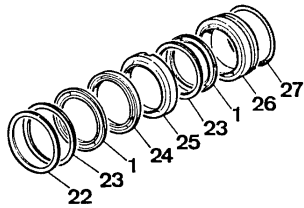
KIT 58



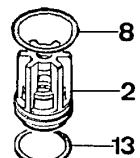
KIT 55



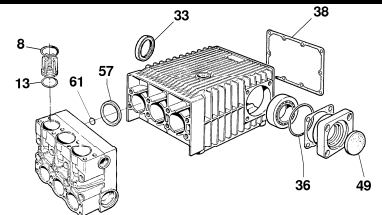
KIT 121



KIT 186



KIT 187



POS.	CODICE PART NO. RÉF.	DENOMINAZIONE - DESCRIPTION - DESCRIPTION	Q.TY	POS.	CODICE PART NO. RÉF.	DENOMINAZIONE - DESCRIPTION - DESCRIPTION	Q.TY
1	802201002	GUARNIZIONE V 45-60	6	42	853515502	SPIA LIVELLO OLIO CON OR	1
2-KIT 186	739824973	GR. VALVOLA A/M	6	43	862216002	VITE TCEI UNI5931	10
3	730416092	COPERCHIO VALVOLE	2	44	863439002	VITE TCEI UNI5931	6
4	863910002	VITE TCEI UNI5931	16	45	843870002	ROSETTA SCHNORR	6
5	864120002	VITE TCEI UNI5931	8	46	739802972	BIELLA COMPLETA	3
6	803265002	ANELLO OR	1	47	853516002	TAPPO OLIO	1
7	852752002	TAPPO G.1"1/2	1	48	730361262	ALBERO ECCENTRICO CKA 73 P	1
8 KIT 186-187	803270002	ANELLO OR	6	48	730366262	ALBERO ECCENTRICO CKA 110 P	1
13 KIT 186-187	803253002	ANELLO OR	6	48	730367262	ALBERO ECCENTRICO CKA 120 P	1
14	730415092	CORPO POMPA	1	49 KIT-187	802099602	CAPPELLOTTO	1
15	803265002	ANELLO OR	1	50	730360262	ALBERO ECCENTRICO CKA 73 - 115 PP	1
16	835092502	NIPPLIO G.1"1/2-G.1"3/4	1	50	730359262	ALBERO ECCENTRICO CKA 90 PP	1
17	803208502	ANELLO OR	1	50	730363262	ALBERO ECCENTRICO CKA 110 PP	1
18	840595002	RACCORDO CURVO D.40-1,57"	1	50	730364262	ALBERO ECCENTRICO CKA 120 PP	1
19	820095002	GALLETTO G.1"3/4	1	51	806585002	LINGUETTA	1
20	852693532	TAPPO G.3/4	1	52	801264002	ANELLO ELASTICO PER ALBERO	1
21	803218002	ANELLO OR	1	53	852007402	SPINOTTO	3
22	730039632	DISTANZIALE DI FONDO	3	54	804470002	BOCCOLA AUTOLUBRIFICANTE	3
23 KIT 55-121	730044322	ANELLO DI SPINTA	6	55	800040002	ANELLO ELASTICO PER FORO	6
24 KIT 55-121	730040322	ANELLO ANTIESTRUSIONE	3	56	730485512	GUIDA PISTONE	3
25 KIT 121	730058532	LANTERNA ANTERIORE	3	57 KIT 58-187	802180102	ANELLO RADIALE	3
26 KIT 121	730070532	LANTERNA POSTERIORE	3	58	844212002	ROSETTA PARASPRUZZI	3
27 KIT 55-121	803283002	ANELLO OR	3	59	730461182	PISTONE CERAMICO D.45	3
28	863703002	VITE TE UNI5739	6	62	843989002	ROSETTA RAME 12X20X1,5	3
29	843844002	ROSETTA ELS UNI1751	6	63	864091002	VITE BLOCCAGGIO PISTONE	3
30	730024612	PIEDINO POMPA	2	68	311482322	CUFFIA DI PROTEZIONE (OPTIONAL)	1
31	730506092	CARTER POMPA	1	69	843710002	ROSETTA D.9X24X2 UNI 6593 (OPTIONAL)	2
32	863696002	VITE TCEI UNI5931	8	70	862475002	VITE TCEIIM8X14 UNI 5931 (OPTIONAL)	2
33 KIT-187	802143002	ANELLO RADIALE	2=1	74	730528322	DISTANZIALE ANELLO RADIALE	3
34	730477092	SUPP. CUSCINETTO	2	75 KIT ANTIPOLVERE	730531722	FILTRO ANTIPOLVERE CK	1
35/1	730413652	SPESSORE SP.0,1	1	76 KIT ANTIPOLVERE	730531612	LAMIERA ANTIPOLVERE POMPE CK	1
35/2	730414652	SPESSORE SP.0,2	1	REPAIR KIT	NO.s INCLUDED	PCS.	
36 KIT-187	803210672	ANELLO OR	2	KIT 55	739841973	KIT RICAMBI	18
37	812940002	CUSCINETTO 45X80X26	2	KIT 58	739842973	KIT RICAMBI	3
38 KIT-187	730065722	GUARNIZIONE COPERCHIO POSTERIORE	1	KIT 121	739846973	KIT RICAMBI	27
39	730475092	COPERCHIO POSTERIORE	1	KIT 186	739871973	KIT RICAMBI	18
40	824107002	GUARNIZIONE	1	KIT 187	731028973	KIT RICAMBI	24
41	852579532	TAPPO G.3/8	1	KIT ANTIPOLVERE CK	730531973	KIT RICAMBI	2