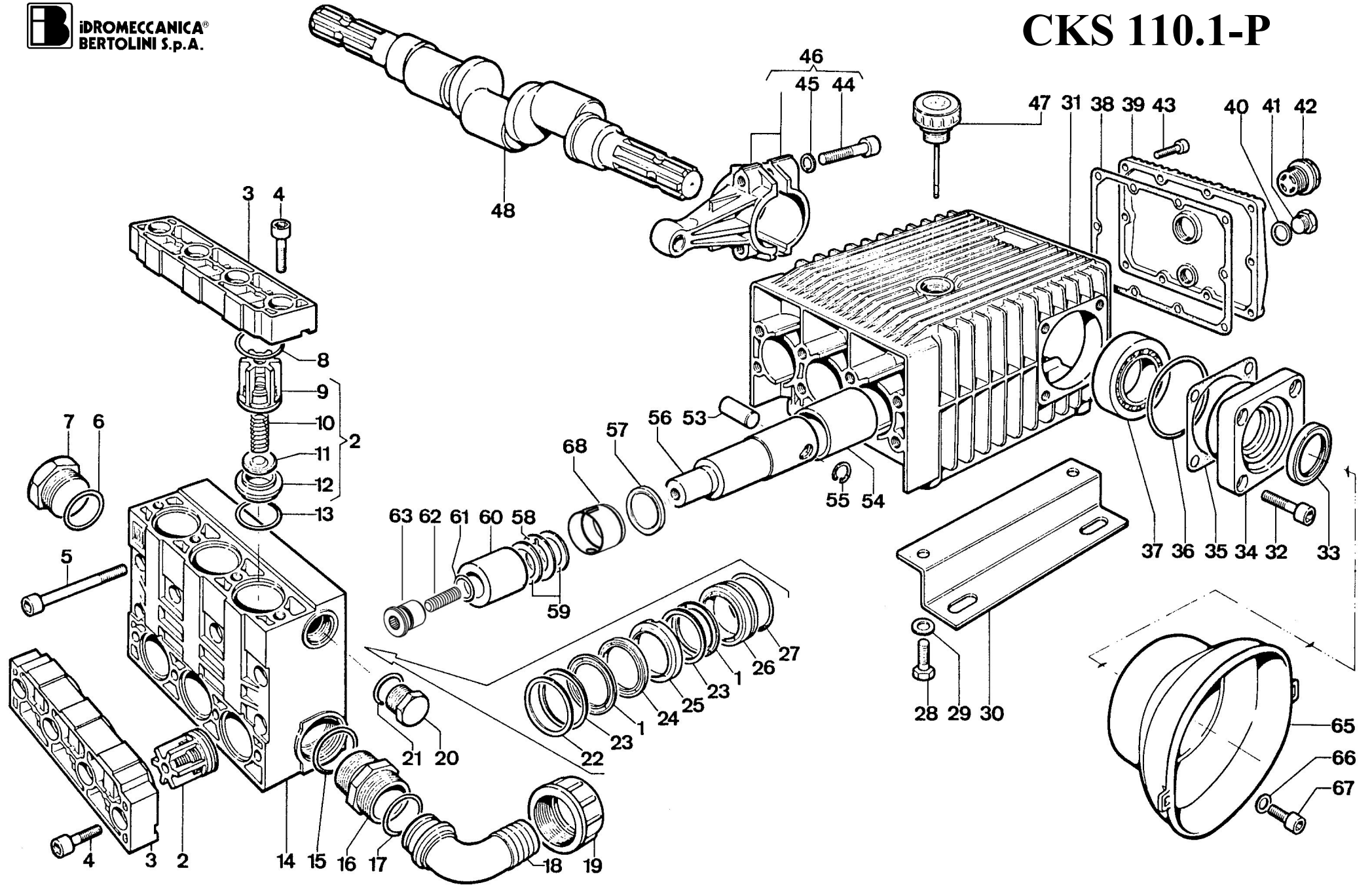


CKS 110.1-P



pompa mod. CKS 110.1-P

POS.	CODICE - PART NO. - RÉF.	Q.TY	DENOMINAZIONE - DESCRIPTION - DESCRIPTION	POS.	CODICE - PART NO. - RÉF.	Q.TY	DENOMINAZIONE - DESCRIPTION - DESCRIPTION
1	80.2201.00.2	6	"V" SEALS	35	73.0413.65.2	1	SHIM SP.0,1
2	73.9801.97.3	6	VALVES ASSY	35	73.0414.65.2	1	SHIM SP.0,2
3	73.0017.09.2	2	VALVES COVER	36	80.3210.67.2	2	O-RING 2,62x88,57
4	86.4200.00.2	8	BOLT TCEI M14x40 UNI5931	37	81.2940.00.2	2	BEARING
5	86.4090.00.2	6	BOLT TCEI M12x100 UNI5931	38	73.0065.72.2	1	COVER GASKET
6	80.3209.00.2	1	O-RING 2,62x39,34	39	73.0002.09.2	1	CRANKCASE COVER
7	85.2740.00.2	1	CAP G.1"1/4	40	82.4107.00.2	1	GASKET D.16,5x23x1
8	80.3262.00.2	6	O-RING 3,53x41,28	41	85.2579.00.2	1	CAP G.3/8
13	80.3251.00.2	6	O-RING 3,53x32,93	42	85.3515.50.2	1	OIL SIGHT GLASS + O-RING
14	73.0214.09.2	1	PUMP HEAD	43	86.2216.00.2	10	BOLT TCEI M6x25 UNI5931
15	80.3209.00.2	1	O-RING 2,62x39,34	44	86.3439.00.2	6	BOLT TCEI M10x45 UNI5931
16	83.5090.35.2	1	NIPPLE G.1"1/4-G.1"1/2	45	84.3870.00.2	6	SCHNORR WASHER D.10,5
17	80.3219.10.2	1	O-RING 3,0x30	46	73.9802.97.3	3	CONROD
18	84.0591.00.2	1	90° ELBOW CONNECTOR D.40	47	85.3516.00.2	1	OIL PLUG + DIP STIK
19	82.0070.00.2	1	WING NUT G.1"1/2	48	73.0366.26.2	1	SHAFT vr."P"
20	85.2693.00.2	1	CAP G.3/4	53	85.2007.40.2	3	PISTON PIN D.18x35
21	80.3218.00.2	1	O-RING 3,0x22	54	80.4470.00.2	3	BUSHING
22	73.0039.53.2	3	SPACER	55	80.1137.00.2	6	SNAP RING D.18
23	73.0044.32.2	6	THRUST RING	56	73.0526.09.2	3	PLUNGER ROD
24	73.0040.32.2	3	ANTIEXTRUSION RING	57	80.2180.10.2	3	OIL SEAL
25	73.0058.53.2	3	FRONT GLAND	58	84.4301.00.2	3	SPLASH GUARD WASHER
26	73.0070.53.2	3	REAR GLAND	59	73.0056.53.2	6	PISTON SPACER
27	80.3283.00.2	3	O-RING 3,53x58,74	60	73.0010.18.2	3	PISTON D.45
28	86.3703.00.2	6	BOLT TE M12x25 UNI5739	61	80.3195.50.2	3	O-RING 2,62x20,24 VITON
29	84.3844.00.2	6	WASHER	62	86.3900.00.2	3	BOLT STEI M 12X40
30	73.0024.61.2	2	MOUNTING RAIL	63	73.0342.51.2	3	PISTON PLUG
31	73.0525.09.2	1	CRANKCASE	65	31.1482.32.2	1	PLAIN SAFTY CONE (OPTIONAL)
32	86.3696.00.2	8	BOLT TCEI M12x25 UNI5931	66	84.3710.00.2	2	WASHER D.9x24x2 UNI6593 (OPTIONAL)
33	80.2143.00.2	2	OIL SEAL	67	86.2475.00.2	2	BOLT TCEI M8x14 UNI5931 (OPTIONAL)
34	73.0411.09.2	2	BEARING COVER	68	73.0528.32.2	3	OIL SEAL SPACER