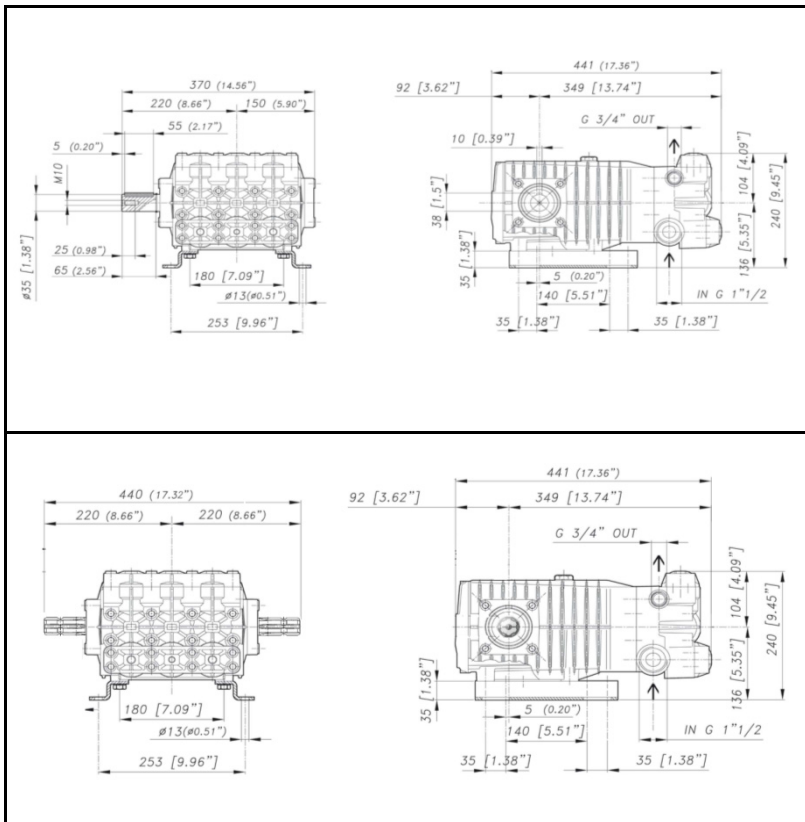
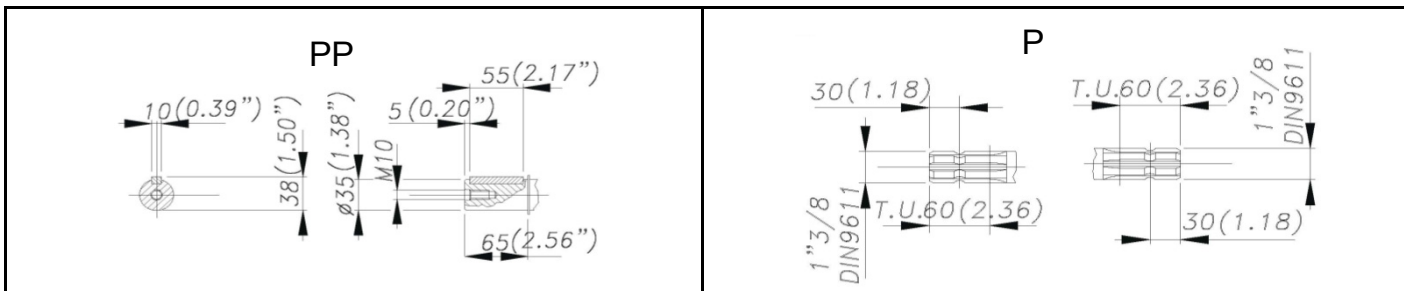


## DIMENSIONI D'INGOMBRO - OVERALL DIMENSIONS



## ALBERO POMPA - PUMP SHAFT



## COPPIA DI SERRAGGIO - TORQUE CHART

CODICE - CODE	Q.TY	POS	N.m	Lbr.ft
86.3910.00.2	16	4	68	50.2
86.4120.00.2	8	5	68	50.2
86.3703.00.2	4	28	68	50.2
86.3696.00.2	8	32	40	29.6
86.2216.00.2	10	43	10	7.4
86.3439.00.2	6	44	40	29.5
86.3900.00.2	3	62	40 (LOXEAL 54-03)	29.6 (LOXEAL 54-03)
73.0342.51.2	3	63	40 (LOXEAL 54-03)	29.6 (LOXEAL 54-03)

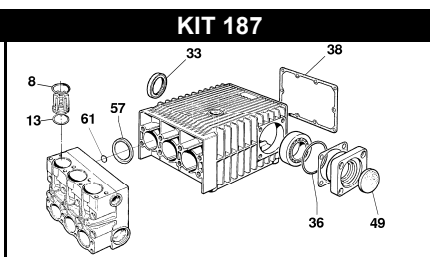
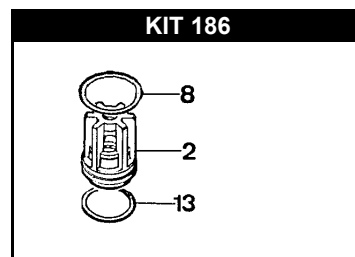
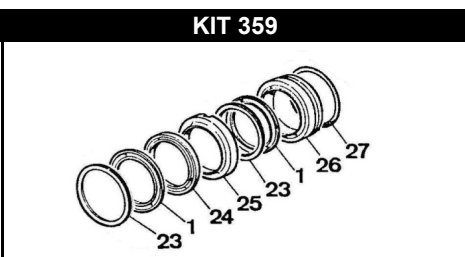
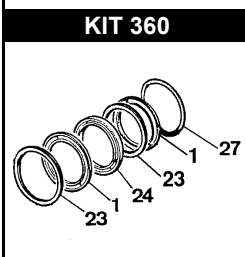
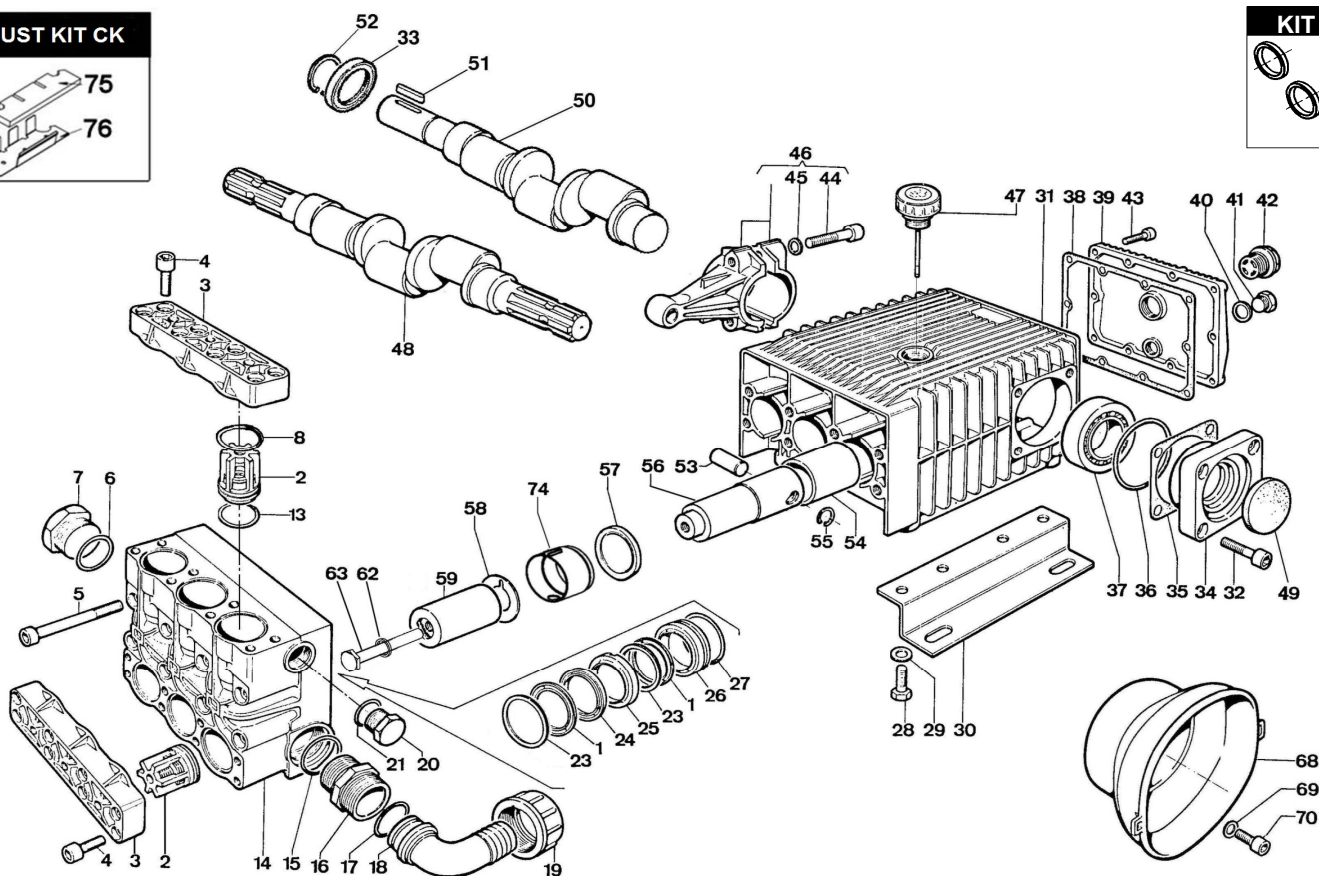
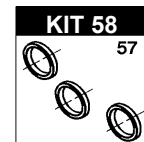
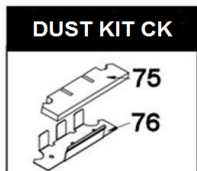
Tolleranza di serraggio: 0/-10%  
Tolerance on torque value: 0/-10%

## INFORMAZIONI UTILI USEFUL INFORMATION

LUBRIFICANTE - LUBRICANT:  
OLIO MOTORE O SEMIIDRAULICO SAE 30  
MOTOR OIL OR SEMI-HYDRAULIC OIL SAE 30



# CK 150 P - CK 150 PP



POS.	CODICE PART NO. RÉF.	DENOMINAZIONE - DESCRIPTION - DESCRIPTION	Q.TY
1	802232002	V PACKING DIA. 50X60	6
2-KIT 186	739824973	VALVES ASSY	6
3	730416092	VALVES COVER	2
4	863910002	BOLT TCEI M12x40 UNI5931	16
5	864120002	BOLT TCEI M12x110 UNI5931	8
6	803209602	O-RING 2.62x47,3	1
7	852752002	CAP G. 1"1/2	1
8	803270002	O-RING 3.53x49,2	6
13	803253002	O-RING 3.53x34,52	6
14	730761092	PUMP HEAD	1
15	803209602	O-RING 2.62x47,3	1
16	835092502	NIPPLE G. 1"1/2-G. 1"3/4	1
17	803208502	O-RING 2.62x37,77	1
18	840595002	90° ELBOW CONNECTOR DIA.40 - 1,57"	1
19	820095002	WING NUT G. 1"3/4	1
20	852693532	CAP G. 3/4	1
21	803218002	O-RING 3x22	1
23	730047322	THRUST RING	6
24	730767322	ANTI-EXTRUSION RING	3
25	730769532	FRONT GLAND 50x60	3
26	730768532	REAR GLAND 50x60	3
27	803283002	O-RING 3.53x58,74	3
28	863703002	BOLT M12X25 UNI5739	6
29	843906002	WASHER D.13 UNI11751	6
30	730024612	MOUNTING RAIL	2
31	730525092	CRANKCASE	1
32	863696002	BOLT TCEI M12x25 UNI5931	8
33	802143002	OIL SEAL	2-1
34	730411092	BEARING COVER D.80	2
35/1	730413652	SHIM SP.0,1	1
35/2	730414652	SHIM SP.0,2	1
36	803210672	O-RING 2.62x88,57	2
37	812940002	BEARING 45X80X26	2
38	730065722	COVER GASKET	1
39	730002092	CRANKCASE COVER	1
40	824107002	GASKET D.16,5x23x1	1
41	852579002	CAP G.3/8	1

POS.	CODICE PART NO. RÉF.	DENOMINAZIONE - DESCRIPTION - DESCRIPTION	Q.TY
42	853515502	OIL SIGHT GLASS WITH O-RING	1
43	862216002	BOLT TCEI M6x25 UNI5931	10
44	863439002	BOLT TCEI M10x45 UNI5931	6
45	843870002	SCHNORR WASHER D.10,5	6
46	739802973	CONROD	3
47	853516002	OIL PLUG + DIP STICK	1
48	730367262	ECCENTRIC CRANKSHAFT CK 150 P	1
49	802099602	CAP D.52x7	1
50	730364262	ECCENTRIC CRANKSHAFT CK 150 PP	1
51	806585002	TAB 10x8x55	1
52	801264002	SNAP RING D.35	1
53	852007402	PISTON PIN DIA.18x35	3
54	804470002	BUSHING	3
55	800040002	SNAP RING D.18	6
56	730485512	PISTON GUIDE	3
57	802180102	OIL SEAL	3
58	844212002	WASHER	3
59	730550182	CERAMIC PISTON D.50	3
62	843898002	COPPER WASHER D. 12X20X1,5	3
63	864091002	PISTON BOLT M12X100 UNI5737	3
68	311482322	PLAIN SAFETY CONE (OPTIONAL)	1
69	843710002	WASHER DIA.9X24X2 UNI 6593 (OPTIONAL)	2
70	862475002	BOLT M8X14 UNI 5931 (OPTIONAL)	2
74	730528322	OIL SEAL SPACER	3
75	730531722	DUST SHEET	1
76	730531612	DUST FILTER	1

REPAIR KIT	ITEM NO.s INCLUDED	DENOMINAZIONE - DESCRIPTION - DESCRIPTION	PCS.
KIT 58	739842973	SPARE PARTS KIT	3
KIT 186	739871973	SPARE PARTS KIT	18
KIT 187	731028973	SPARE PARTS KIT	24
KIT 359	739939973	SPARE PARTS KIT	24
KIT 360	739940973	SPARE PARTS KIT	18
DUST KIT CK	730531973	SPARE PARTS KIT	2