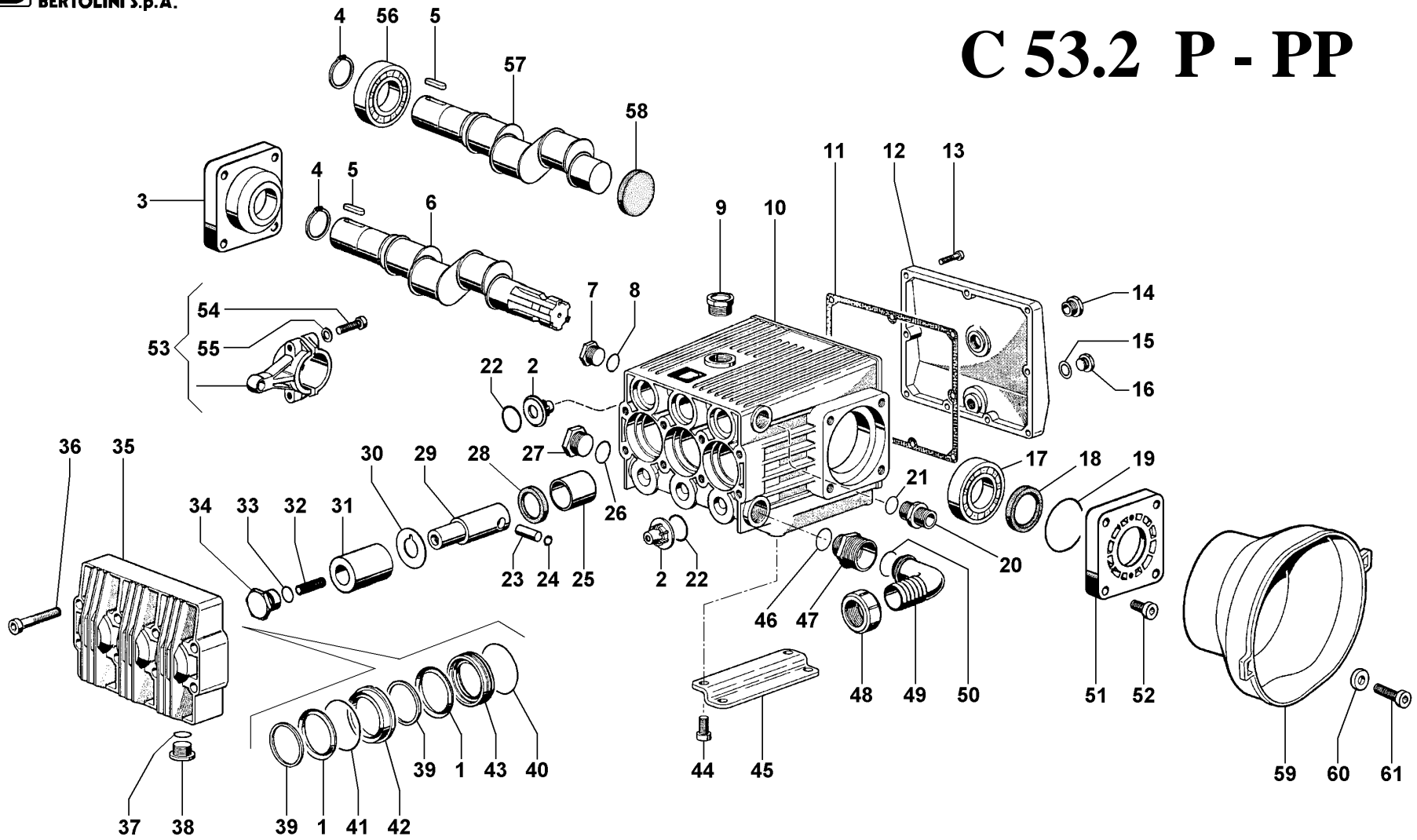


C 53.2 P - PP



CATALOGO RICAMBI - SPARE PARTS LIST - LISTE DE PIÈCES

pump mod. C 53.2 P - PP

POS.	CODICE - PART NO. - RÉF.	Q.TY	DENOMINAZIONE - DESCRIPTION - DESCRIPTION	POS.	CODICE - PART NO. - RÉF.	Q.TY	DENOMINAZIONE - DESCRIPTION - DESCRIPTION
1	80.2170.00.2	6	"V" PACKING DIA.38	33	80.3182.50.2	3	VITON O-RING 2,62x17,13
2	53.9801.97.3	6	VALVE ASSY	34	53.0015.53.2	3	CAP
3	53.0036.09.2	1	BEARING COVER DIA.35 SIDE	35	53.9802.97.3	1	PUMP BODY KIT
4	80.1264.00.2	1	RING DIA.35	36	86.3521.00.2	8	SCREW M10x60 UNI5931
5	80.6578.00.2	1	TAB 10x8x35	37	80.3187.00.2	3	O-RING 2,62x17,86
6	53.0006.26.2	1	CRANKSHAFT vr."P"	38	85.2625.00.2	3	CAP
7	85.2633.00.2	1	CAP G.1/2	39	53.0014.32.2	6	SEAL PACKER
8	80.3187.00.2	1	O-RING 2,62x17,86	40	80.3209.60.2	3	O-RING 2,62x47,30
9	85.3518.00.2	1	FILLER PLUG	41	80.3265.00.2	3	O-RING 3,53x46,04
10	53.0022.09.2	1	CRANKCASE	42	53.0009.53.2	3	FRONT GLAND DIA.38
11	53.0012.72.2	1	COVER GASKET	43	53.0008.53.2	3	REAR GLAND DIA.38
12	53.0033.09.2	1	CRANKCASE COVER	44	86.3212.00.2	4	SCREW M10x20 UNI5931
13	86.2216.00.2	9	SCREW M6x25 UNI5931	45	53.0010.61.2	2	MOUNTING RAIL
14	85.3505.00.2	1	OIL SIGHT GLASS	46	80.3205.00.2	1	O-RING 2,62x25,07
15	82.4081.00.2	1	GASKET DIA.13,2	47	83.5062.10.2	1	NIPPLES G.3/4-M34
16	85.2542.50.2	1	CAP G.1/4	48	82.0049.00.2	1	WING NUT M34
17	81.2846.00.2	2÷1	BALL BEARING DIA.35x72x17	49	84.0542.00.2	1	90° ELBOW CONNECTOR DIA.25
18	80.2143.10.2	2÷1	OIL SEAL DIA.35x52x7	50	80.3200.00.2	1	O-RING 2,62x22,22
19	80.3287.00.2	2	O-RING 3,53x82,14	51	53.0035.09.2	1	BEARING COVER 1"3/8 SIDE
20	83.5051.10.2	1	NIPPLES G.1/2	52	86.3212.00.2	8	SCREW M10x20 UNI5931
21	80.3187.00.2	1	O-RING 2,62x17,86	53	53.9800.97.2	3	CONROD
22	80.3320.00.2	6	O-RING 5,0x26	54	86.2730.00.2	6	SCREW M8x30 UNI5931
23	85.2006.24.2	3	PISTON PIN DIA.12	55	84.3652.00.2	6	WASHER DIA.8,4x13x1,2
24	80.1080.00.2	6	RING DIA.12	56	81.2848.00.2	1	ROLLER BEARING DIA.35x72x17
25	80.4460.00.2	3	BUSHING DIA.35	57	53.0020.26.2	1	CRANKSHAFT DIA.35 vr."PP"
26	80.3205.00.2	1	O-RING 2,62x25,07	58	80.2099.60.2	1	CAP D.52x7 (vr."PP")
27	85.2680.00.2	1	CAP G.3/4	59	31.1468.32.2	1	PLAIN SAFETY CONE (OPTIONAL)
28	80.2133.00.2	3	OIL SEAL DIA.35x45x7	60	84.3801.00.2	4	WASHER DIA.10,5x18x2 (OPTIONAL)
29	53.0021.09.2	3	PLUNGER ROD DIA.35	61	86.3265.00.2	4	SCREW M10x25 UNI5931 (OPTIONAL)
30	53.0017.68.2	3	WASHER				
31	53.0018.18.2	3	CERAMIC PISTON DIA.38				
32	86.3325.00.2	3	SCREW M10x35 UNI5931				

CATALOGO RICAMBI - SPARE PARTS LIST - LISTE DE PIÈCES

pump mod. C 53.2 P - PP

POS.	CODICE - PART NO.	Q.TY	DENOMINAZIONE - DESCRIPTION	MATERIAL	POS.	CODICE - PART NO.	Q.TY	DENOMINAZIONE - DESCRIPTION	MATERIAL
1	80.2170.00.2	6	"V" PACKING DIA.38	Nitrile BUNA	33	80.3182.50.2	3	VITON O-RING 2,62x17,13	Viton
2	53.9801.97.3	6	VALVE ASSY	Plastic & Steel	34	53.0015.53.2	3	CAP	Stainless steel
3	53.0036.09.2	1	BEARING COVER DIA.35 SIDE	Aluminium green	35	53.9802.97.3	1	PUMP BODY KIT	Aluminium anod.
4	80.1264.00.2	1	RING DIA.35	Steel	36	86.3521.00.2	8	SCREW M10x60 UNI5931	Steel
5	80.6578.00.2	1	TAB 10x8x35	Steel	37	80.3187.00.2	3	O-RING 2,62x17,86	BUNA
6	53.0006.26.2	1	CRANKSHAFT vr."P"	Steel	38	85.2625.00.2	3	CAP	Steel
7	85.2633.00.2	1	CAP G.1/2	Steel	39	53.0014.32.2	6	SEAL PACKER	Plastic
8	80.3187.00.2	1	O-RING 2,62x17,86	BUNA	40	80.3209.60.2	3	O-RING 2,62x47,30	BUNA
9	85.3518.00.2	1	FILLER PLUG	Nylon	41	80.3265.00.2	3	O-RING 3,53x46,04	BUNA
10	53.0022.09.2	1	CRANKCASE	Aluminium anod.	42	53.0009.53.2	3	FRONT GLAND DIA.38	Brass
11	53.0012.72.2	1	COVER GASKET	Cork	43	53.0008.53.2	3	REAR GLAND DIA.38	Brass
12	53.0033.09.2	1	CRANKCASE COVER	Aluminium green	44	86.3212.00.2	4	SCREW M10x20 UNI5931	Steel
13	86.2216.00.2	9	SCREW M6x25 UNI5931	Steel	45	53.0010.61.2	2	MOUNTING RAIL	Steel
14	85.3505.00.2	1	OIL SIGHT GLASS	Plastic	46	80.3205.00.2	1	O-RING 2,62x25,07	BUNA
15	82.4081.00.2	1	GASKET DIA.13,2	Plastic	47	83.5062.10.2	1	NIPPLES G.3/4-M34	Nylon
16	85.2542.50.2	1	CAP G.1/4	Steel	48	82.0049.00.2	1	WING NUT M34	Plastic
17	81.2846.00.2	2÷1	BALL BEARING DIA.35x72x17	Steel	49	84.0542.00.2	1	90° ELBOW CONNECTOR DIA.25	Plastic
18	80.2143.10.2	2÷1	OIL SEAL DIA.35x52x7	BUNA	50	80.3200.00.2	1	O-RING 2,62x22,22	BUNA
19	80.3287.00.2	2	O-RING 3,53x82,14	BUNA	51	53.0035.09.2	1	BEARING COVER 1"3/8 SIDE	Aluminium green
20	83.5051.10.2	1	NIPPLES G.1/2	Steel	52	86.3212.00.2	8	SCREW M10x20 UNI5931	Steel
21	80.3187.00.2	1	O-RING 2,62x17,86	BUNA	53	53.9800.97.2	3	CONROD	Aluminium
22	80.3320.00.2	6	O-RING 5,0x26	BUNA	54	86.2730.00.2	6	SCREW M8x30 UNI5931	Steel
23	85.2006.24.2	3	PISTON PIN DIA.12	Steel	55	84.3652.00.2	6	WASHER DIA.8,4x13x1,2	Steel
24	80.1080.00.2	6	RING DIA.12	Steel	56	81.2848.00.2	1	ROLLER BEARING DIA.35x72x17	Steel
25	80.4460.00.2	3	BUSHING DIA.35	Steel	57	53.0020.26.2	1	CRANKSHAFT DIA.35 vr."PP"	Steel
26	80.3205.00.2	1	O-RING 2,62x25,07	BUNA	58	80.2099.60.2	1	CAP D.52x7 (vr."PP")	Plastic
27	85.2680.00.2	1	CAP G.3/4	Steel	59	31.1468.32.2	1	PLAIN SAFETY CONE (OPTIONAL)	Plastic
28	80.2133.00.2	3	OIL SEAL DIA.35x45x7	BUNA	60	84.3801.00.2	4	WASHER DIA.10,5x18x2 (OPTIONAL)	Steel
29	53.0021.09.2	3	PLUNGER ROD DIA.35	Aluminium	61	86.3265.00.2	4	SCREW M10x25 UNI5931 (OPTIONAL)	Steel
30	53.0017.68.2	3	WASHER	Steel					
31	53.0018.18.2	3	CERAMIC PISTON DIA.38	Ceramic					
32	86.3325.00.2	3	SCREW M10x35 UNI5931	Steel					