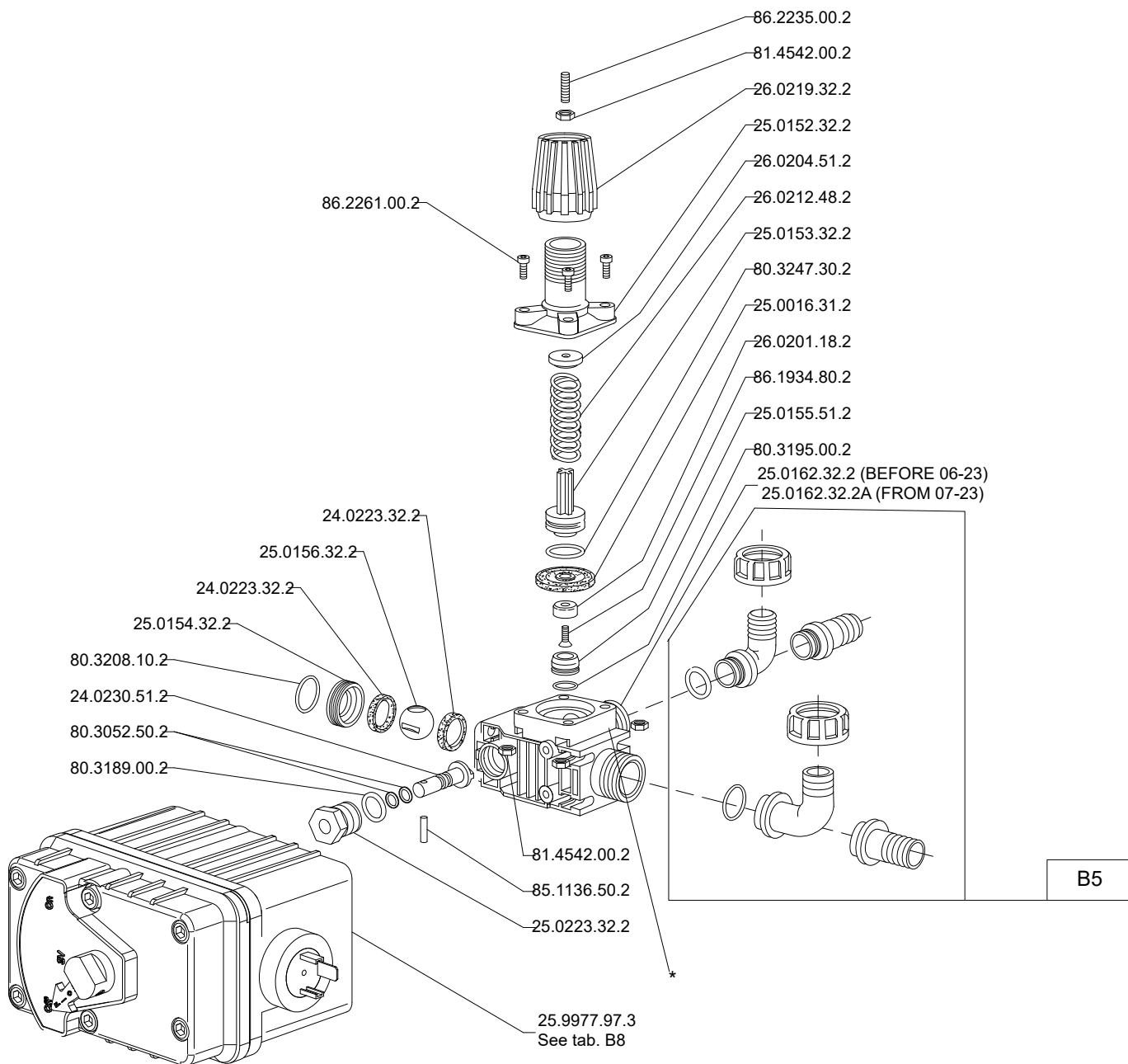
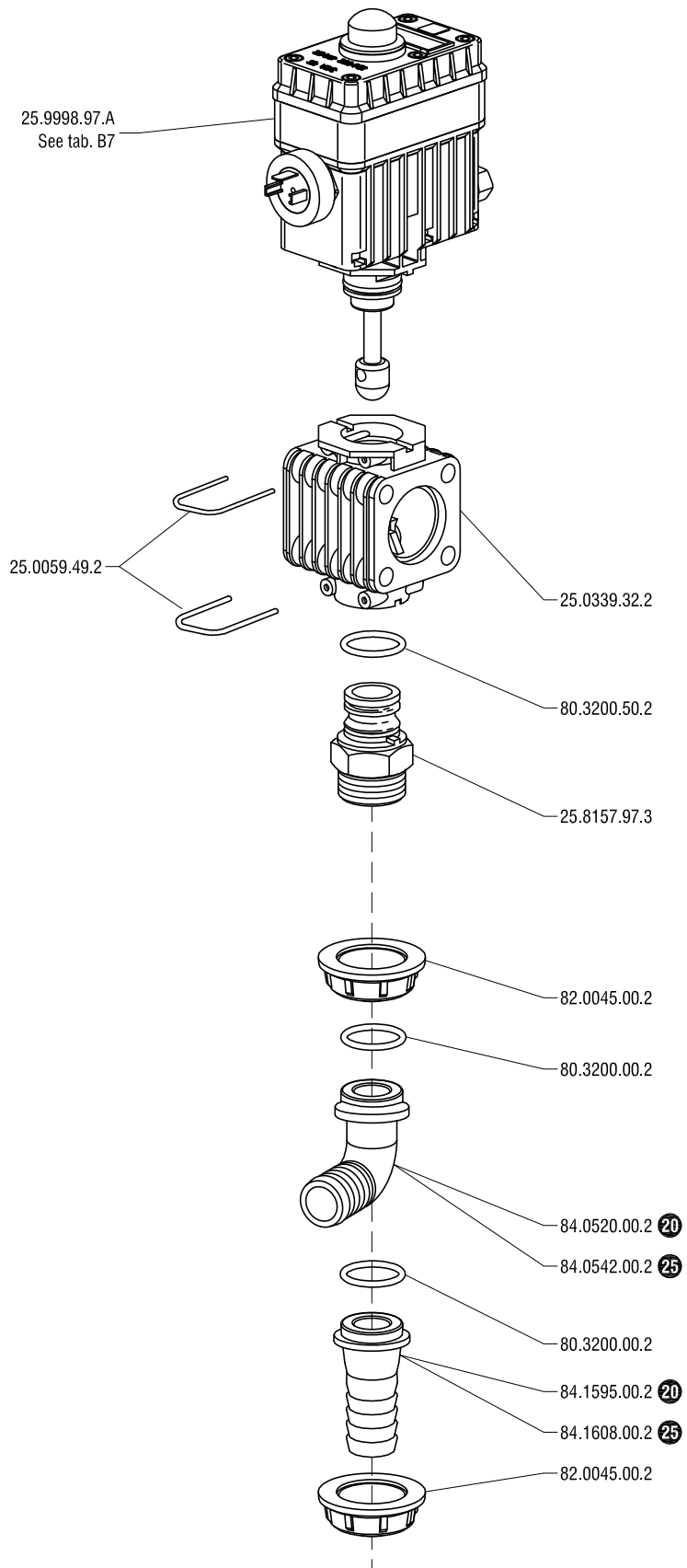


Regulating unit

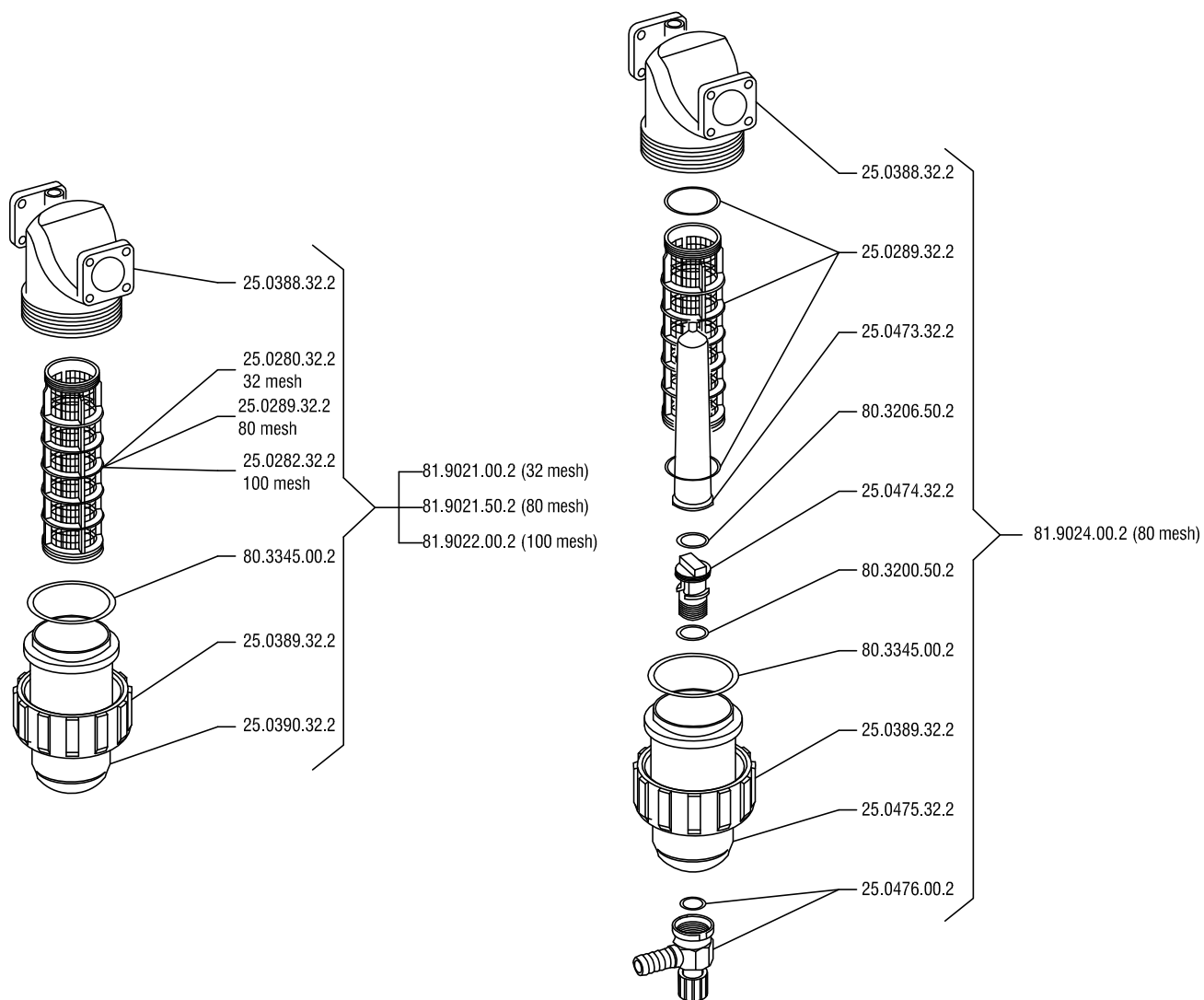


* Bianco: ingresso con centraggio Ø27 (fino a 06-23)
 Giallo: ingresso con centraggio Ø24,5 (da 07-23)
 White: fitting with centering Ø27 (before 06-23)
 Yellow: fitting with centering Ø24,5 (from 07-23)



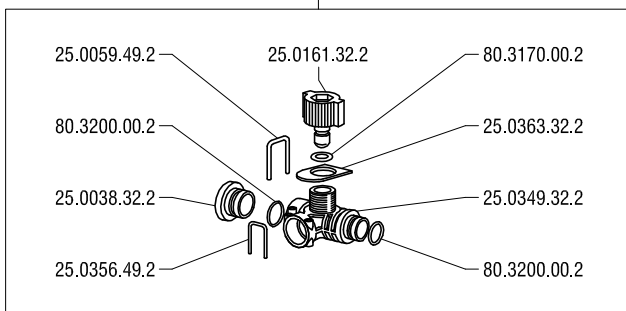
Standard

Selfcleaning

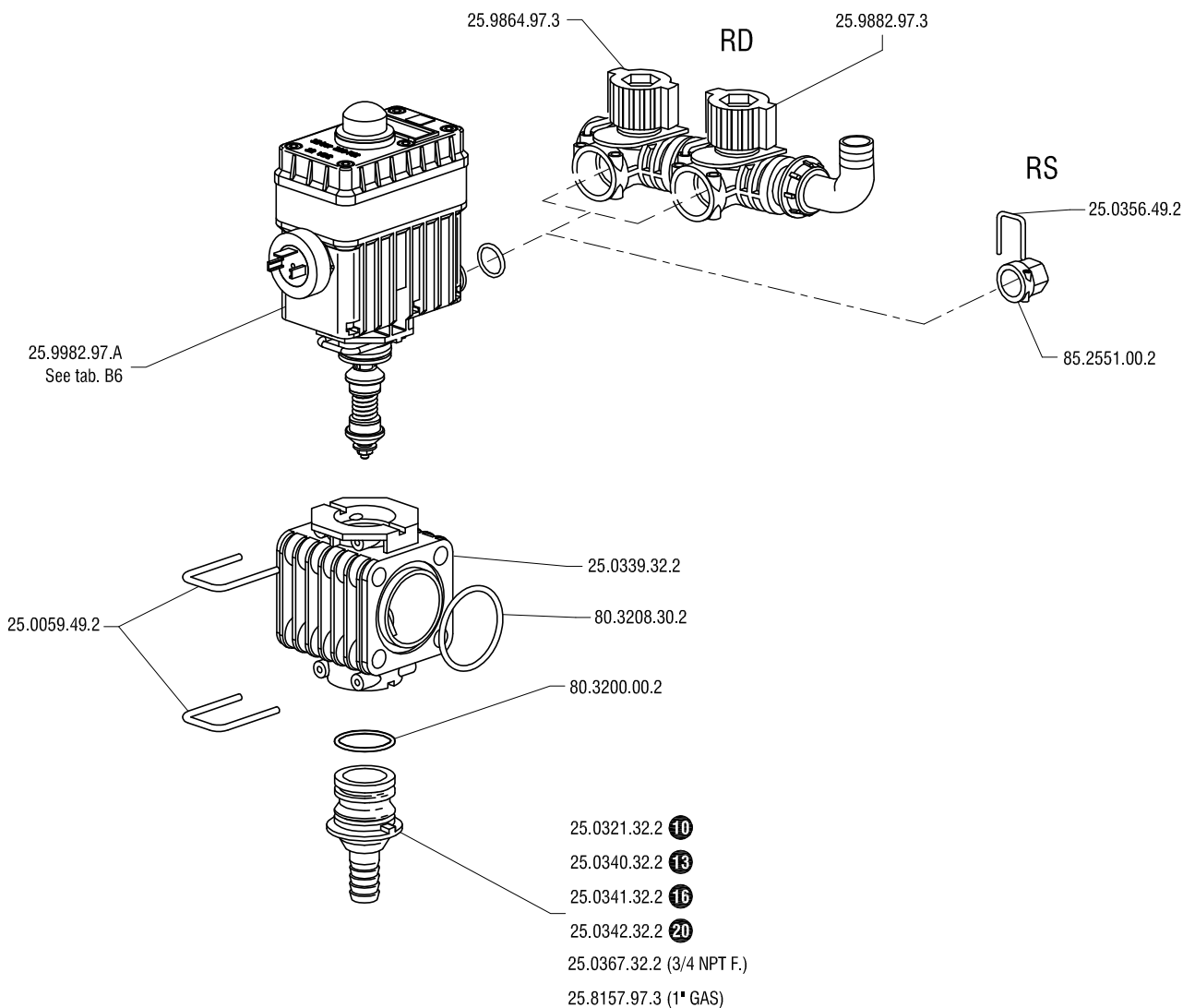
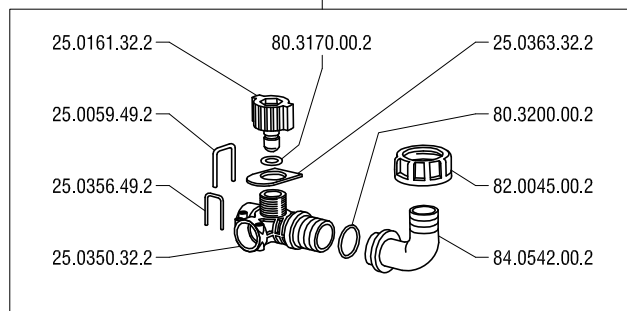


RD motor powered valve

Kit by-pass intermedio
25.9864.97.3
Intermediate by-pass kit



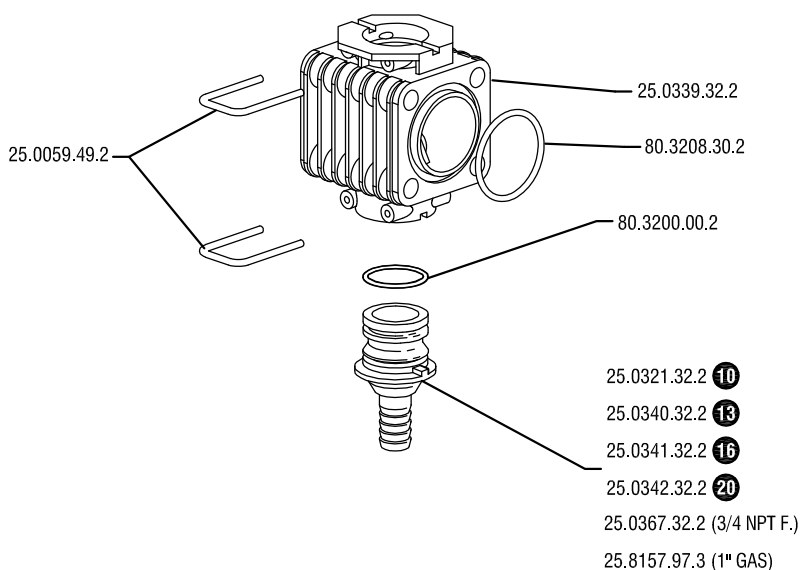
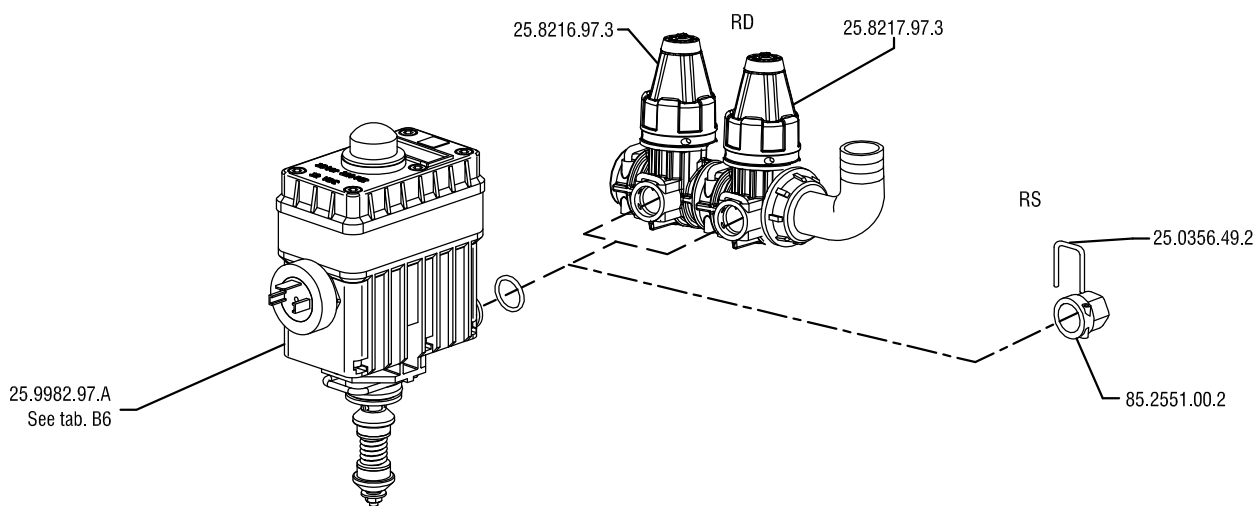
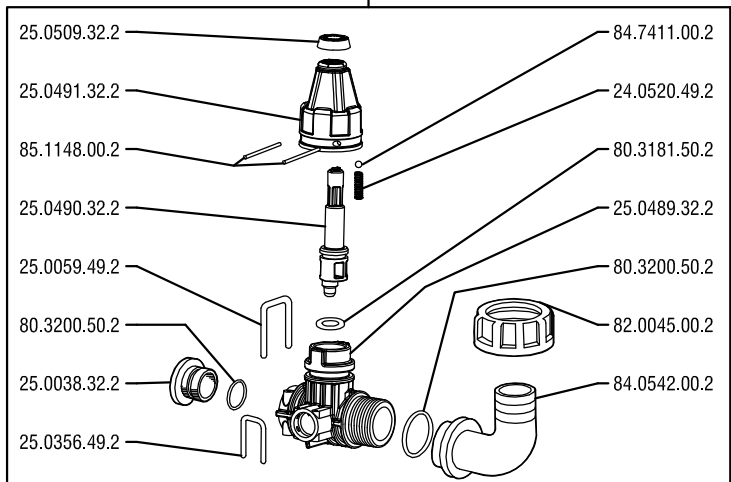
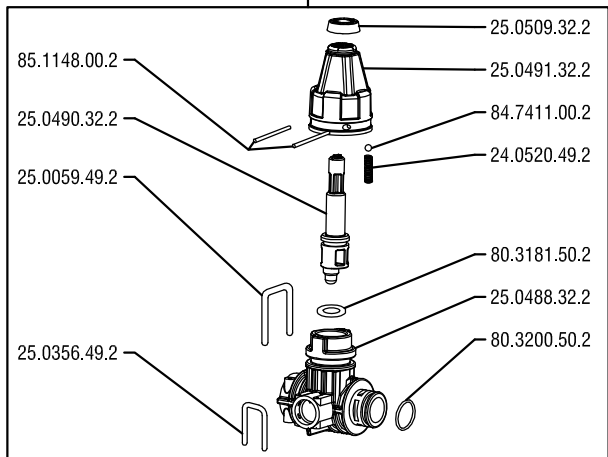
Kit by-pass terminale
25.9882.97.3
Terminal by-pass kit



RD motor powered valve

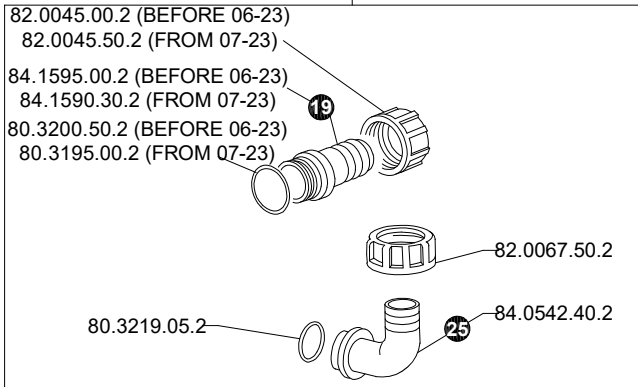
Kit by-pass intermedio
25.8216.97.3
Intermediate by-pass kit

Kit by-pass terminale
25.8217.97.3
Terminal by-pass kit

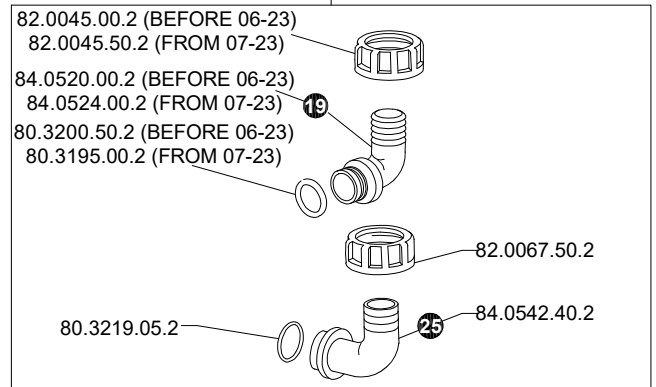


Inlet and by-pass fitting kits

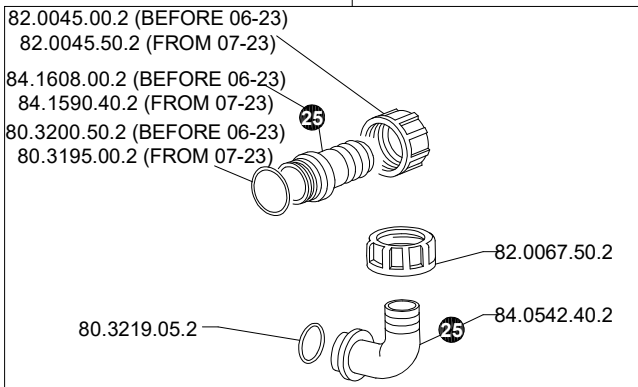
25.1925.97.3 (BEFORE 06-23)
25.1925.97.3A (FROM 07-23)



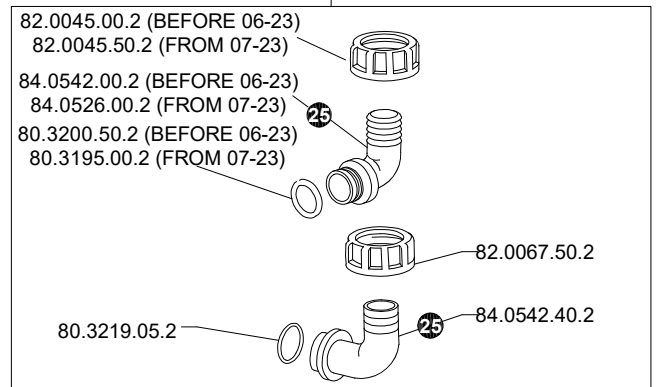
25.1926.97.3 (BEFORE 06-23)
25.1926.97.3A (FROM 07-23)



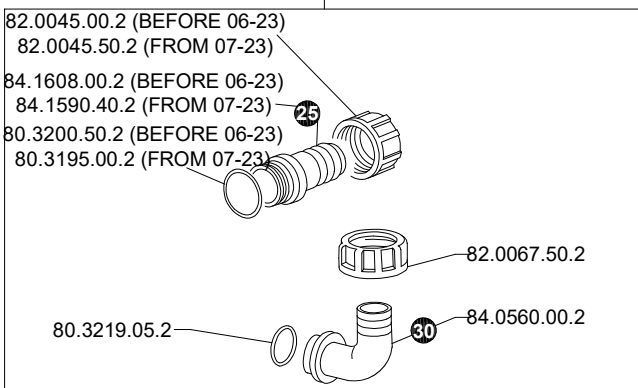
25.2525.97.3 (BEFORE 06-23)
25.2525.97.3A (FROM 07-23)



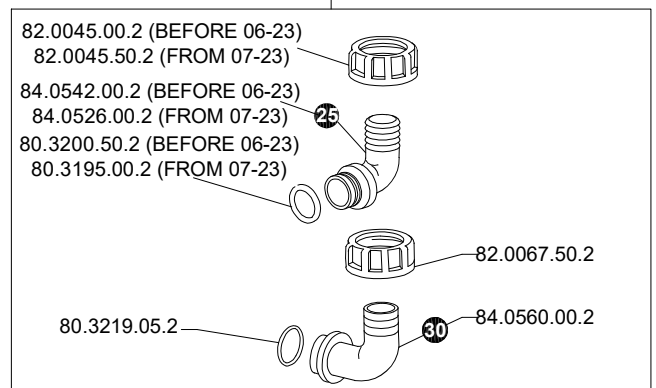
25.2526.97.3 (BEFORE 06-23)
25.2526.97.3A (FROM 07-23)

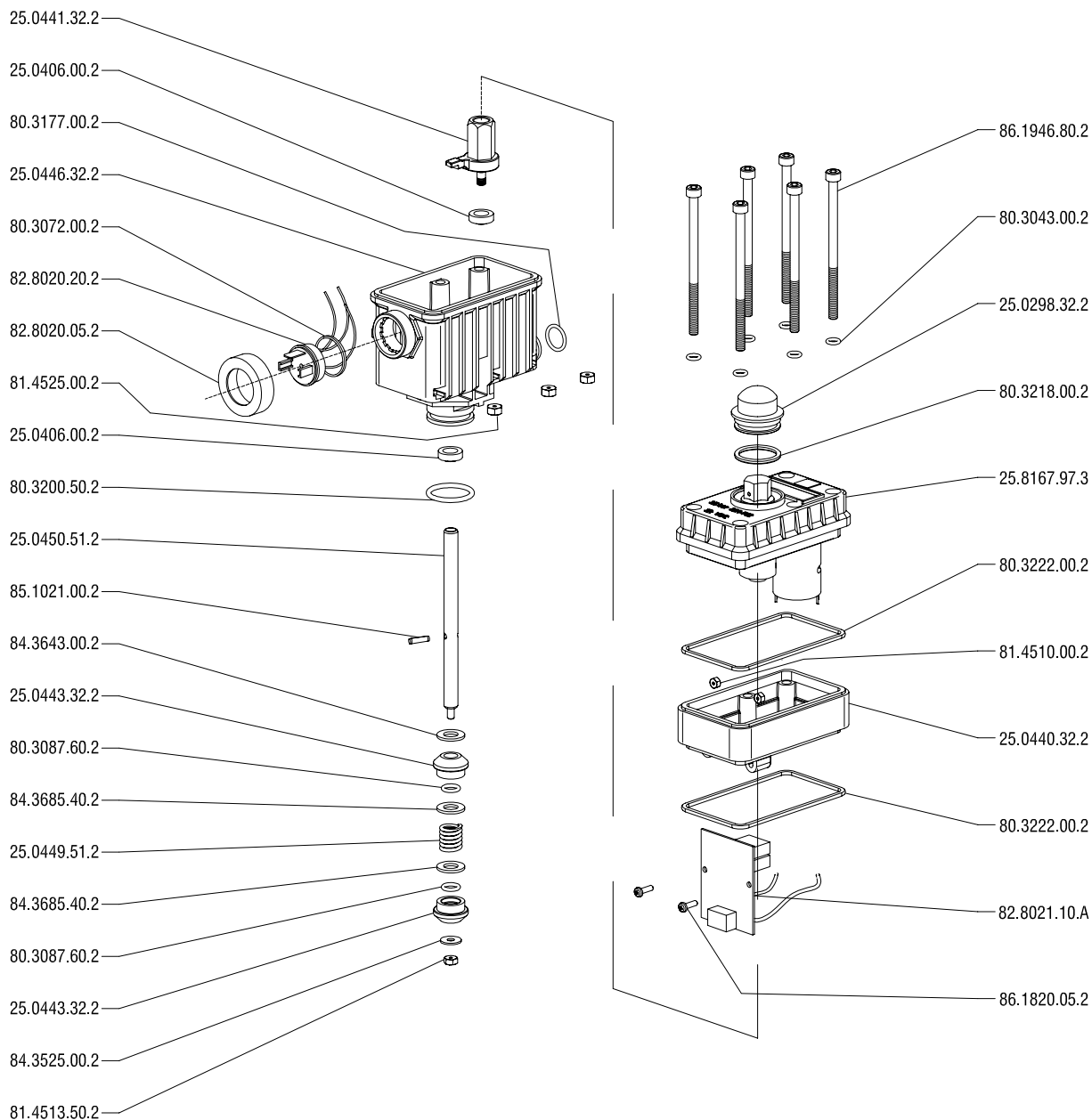


25.2530.97.3 (BEFORE 06-23)
25.2530.97.3A (FROM 07-23)



25.2531.97.3 (BEFORE 06-23)
25.2531.97.3A (FROM 07-23)





MOTOR POWERED MULTICONTROL Motoriduttore VV (9" BLU - 5" VERDE)

Section: **B**

Motor powered volumetric valve (9" BLUE - 5" GREEN)

Table: **B7**

