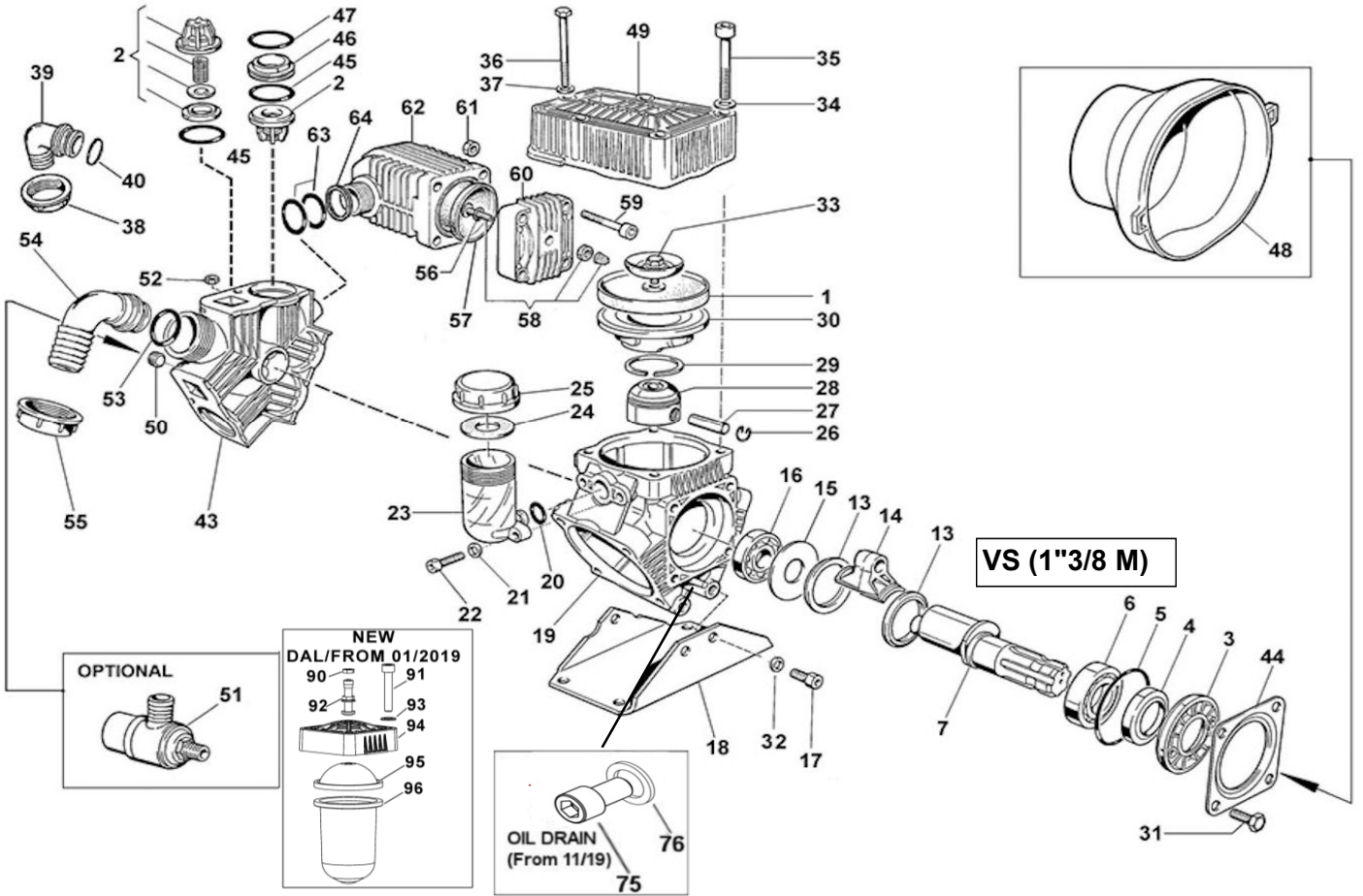




# POLY 2100 VS (1"3/8 M)



POS.	CODICE PART NO. REF.	DENOMINAZIONE - DESCRIPTION - DESCRIPTION	Q.TY	POS.	CODICE PART NO. REF.	DENOMINAZIONE - DESCRIPTION - DESCRIPTION	Q.TY
1	95.0040.31.2	PISTON DIAPHRAGM	3	39	84.0542.40.2	90° ELBOW CONNECTOR DIA.25-1"	1
1	95.0040.33.2	VITON PISTON DIAPHRAGM	3	40	80.3219.05.2	O-RING 3,0x25 VITON	1
1	95.0040.00.ADS	PRE-SET DURAMAX PISTON DIAPHRAGM	3	43	63.0116.32.2	MANIFOLD	1
1	95.0040.00.A	PRE-SET DESMOPAN PISTON DIAPHRAGM	3	44	17.0016.61.2	FLANGE	1
2	28.9905.97.3	S.S. AISI 316 VALVE ASSY (STD.)	6	45	80.3320.70.2	O-RING 5,0x40 VITON	6
2	28.9809.97.3	S.S. AISI 303 VALVE ASSY (OPT.)	6	46	28.0229.32.2	VALVE ASSY SPACER	4
3	53.0007.32.2	HOUSING	1	47	80.3219.90.2	O-RING 3,0x39 VITON	4
4	80.2143.10.2	OIL SEAL DIA.35x52x7	1	48	31.1468.32.2	PLAIN SAFETY CONE (OPTIONAL)	1
5	80.3310.00.2	O-RING 4.0X82	1	49	63.0022.32.2	HEAD	3
6	81.2837.00.2	BEARING DIA.35x62x14	1	50	85.2586.00.2	CAP G.3/8DIN906 INOX A4	1
7	63.0009.26.2	CRANKSAFT "VS" VERSION	1	51	24.3016.97.3	SAFETY VALVE 15bar (OPTIONAL)	1
13	26.0047.76.2	CONNECTING ROD RING	2	52	81.4573.00.2	NUT M8 UNI5588 (BEFORE 01-19)	3
14	23.0005.09.2	LIGHT ALLOY CONROD	3	53	80.3219.15.2	O-RING 3,0x30 VITON	1
15	95.0097.61.2	CRANKSHAFT SPACER	1	54	84.0570.00.2	90° ELBOW CONNECTOR DIA.35-1,37" (OPT.)	1
16	81.2646.00.2	BEARING DIA.20x52x15	1	54	84.0561.00.2	90° ELBOW CONNECTOR DIA.30-1,18" (OPT.)	1
17	86.3265.50.2	SCREW M10x25 UNI5931	3	54	84.0566.00.2	90° ELBOW CONNECTOR DIA.32-1,25" (OPT.)	1
18	63.0135.61.2	MOUNTING RAIL	1	54	84.0571.00.2	90° ELBOW CONNECTOR DIA.38-1,49" (OPT.)	1
19	63.0101.09.2	CRANKCASE	1	54	84.0591.00.2	90° ELBOW CONNECTOR DIA.40-1,57"	1
20	80.3180.00.2	O-RING 2,62x15,08	1	55	82.0070.00.A	WING NUT G.1"1/2	1
21	84.3685.40.2	WASHER DIA.8,2x15x1,5	2	56	80.3213.00.2	O-RING 3,0x6 (BEFORE 01-19)	1
22	86.2684.00.2	SCREW M8x25 UNI5931	2	57	23.0041.31.2	BALLASTER DIAPHRAGM	1
23	23.0008.32.2	OIL FILLER	1	58	86.1608.50.2	AIR VALVE (BEFORE 01-19)	1
24	82.4120.00.2	GASKET DIA.45x19x1,5 (BEFORE 09-20)	1	59	86.2752.50.2	SCREW TCEI M8x35 (BEFORE 01-19)	4
24	23.0097.31.2	OIL FILLER DIAPHRAGM (FROM 09-20)	1	60	11.0004.09.2	BALLASTER COVER (BEFORE 01-19)	1
25	85.2750.00.2A	OIL FILLER CAP G.1" 1/2 FEM.	1	61	81.4580.50.2	NUT M8 UNI5587 INOX	4
26	80.0021.00.2	RING DIA.15	6	62	27.0035.32.2	DAMPER BODY	1
27	85.2006.70.2	PISTON PIN DIA.15	3	63	80.3207.50.2	O-RING 2,62x29,82 VITON	2
28	63.0103.09.2	PISTON	3	64	63.0120.32.2	DAMPER SPACER	1
29	81.8524.00.2	PISTON RING	3	75	86.3694.65.2	SCREW M12x20 UNI5931	1
30	63.0104.01.2	PISTON SLEEVE	3	76	82.4066.00.2	GASKET DIA.13,2x17x1 COPPER	1
31	86.3187.05.2	SCREW M10x18 UNI5739	4	90	86.1611.00.2	AIR VALVE NUT (FROM 01-19)	1
33	63.9806.97.3	KIT SCREW/DISK INOX	3	91	86.2852.10.2	SCREW M8x45 UNI5931 INOX (FROM 01-19)	1
32	84.3760.00.2	SCHNORR WASHER 10,5x16x1	3	92	86.1609.00.2	AIR VALVE (FROM 01-19)	4
34	84.3805.00.2	WASHER DIA.10,5x21x2 UNI6592 INOX	12	93	84.3685.40.2	WASHER D.8,4x15x1,5 (FROM 01-19)	4
35	86.3562.05.2	SCREW M10x70 UNI5931	12	94	11.0183.32.2	BALLASTER COVER (FROM 01-19)	1
36	86.3001.05.2	SCREW M8x75 UNI5931	3	95	10.0041.31.2	SUP. BALLASTER DIAPHRAGM (FROM 01-19)	1
37	84.3697.00.2	WASHER DIA.8,4x18x2	3	96	23.0094.31.2	INF.BALLASTER DIAPHRAGM (FROM 01-19)	1
38	82.0067.50.2	WING NUT G.1"1/4	1				