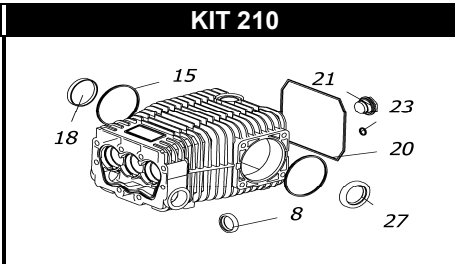
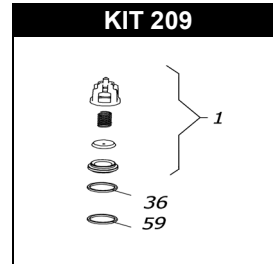
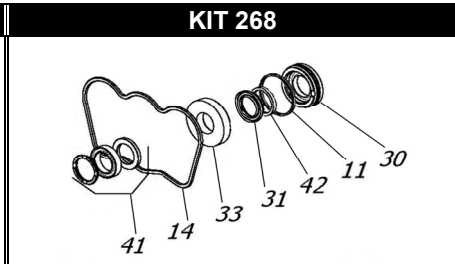
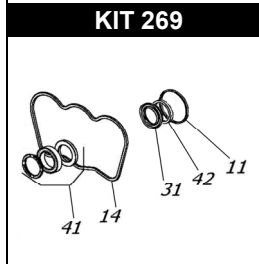
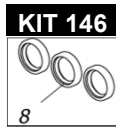
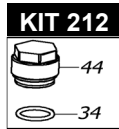
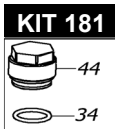
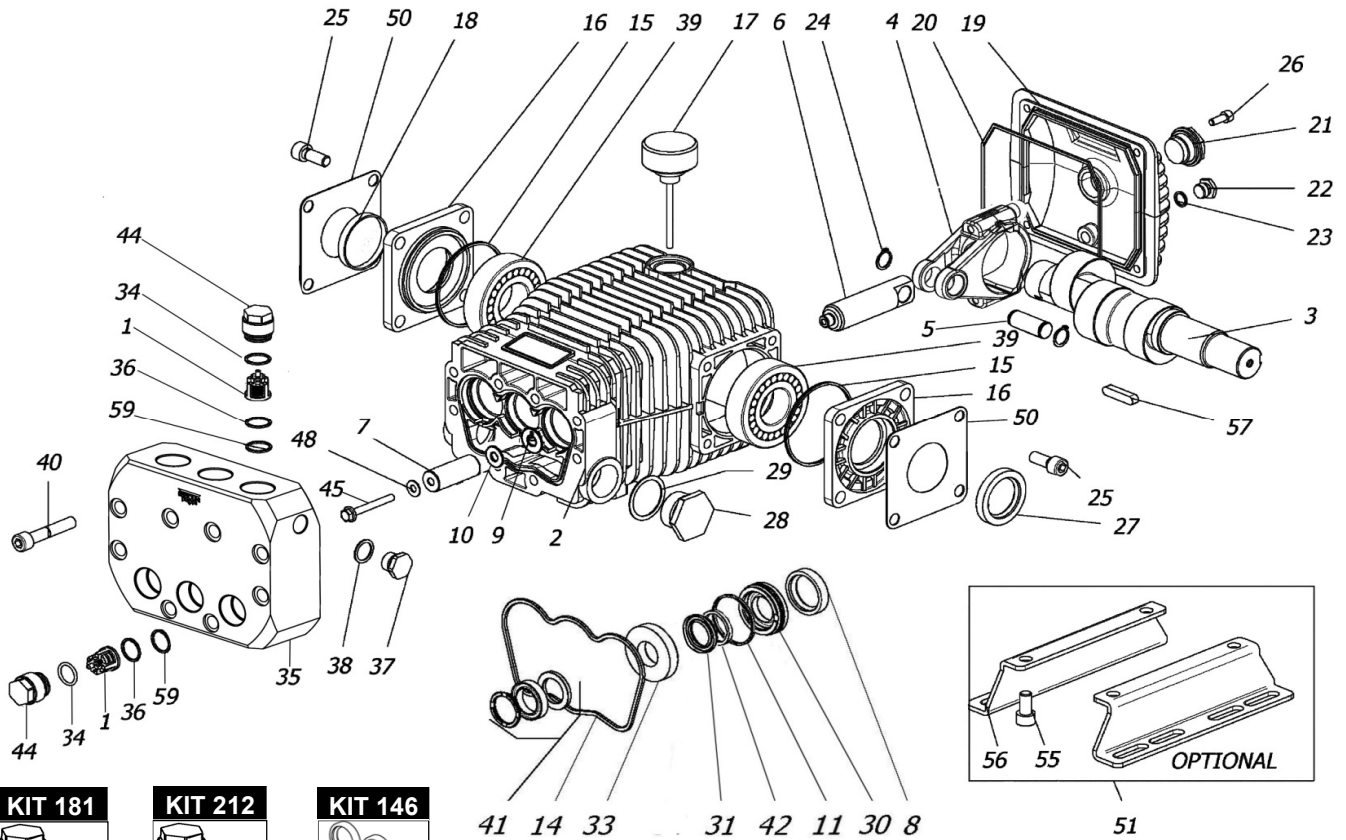


RAL 1646 A-1846 A PREMIUM



POS.	CODICE PART NO. REF.	DENOMINAZIONE - DESCRIPTION - DESCRIPTION	Q.TY
1-kit 209	089837973	VALVES ASSEMBLY	6
2	080001092	PUMP CRANKCASE	1
3	080245262	CRANCKSHAFT RAL 1846 A	1
3	080246262	CRANCKSHAFT RAL 1646 A	1
4	080289112	CONNECTING ROD	3
5	080243492	PISTON PIN	3
6	080270512	PLUNGER ROD	3
7	080069182	PISTON DIA.18	3
8-kit 146-210	802092002	OIL SEAL DIA.25	3
9	843827002	WASHER	3
10	080290512	PISTON SPACER	3
11-kit 150-151	803080102	O-RING	3
14-kit 150-151	080021312	PARTICULAR PROFILE GASKET	1
15-kit 210	803210712	O-RING	2
16	080249092	BEARING COVER	2
17	060020322	OIL FILLER PLUG WITH DIP STICK	1
18-kit 210	802099602	CAP	1
19	080006092	CRANKCASE COVER	1
20-kit 210	803210882	O-RING	1
21-kit 210	853515502	OIL SIGHT GLASS + O-RING	1
22	852543502	PLUG G1/4X9	3
23-kit 210	803057002	O-RING	1
24	801140002	CIRCLIP	6
25	863265002	BOLT M6X25 UNI 5931	8
26	862108002	BOLT M6X16 UNI 5931	4
27-kit 210	802143002	OIL SEAL	1
28	852712002	PLUG G1	1
29	824230002	GASKET	1

POS.	CODICE PART NO. REF.	DENOMINAZIONE - DESCRIPTION - DESCRIPTION	Q.TY
30-kit 150	080117532	BACK GLAND DIA.18	3
31-kit 150-151	802300102	"U" PACKING DIA.18-26	3
32-kit 150-151	802300002	THRUST RING	3
33-kit 150	080113532	FRONT GLAND DIA.18	3
34-kit 181-212	803182802	O-RING	6
35	080246542	PUMP HEAD	1
36-kit 209	803182802	O-RING	6
37	852579002	PLUG G3/8	1
38	824109002	GASKET	1
39	812871002	BEARING	2
40	863560102	BOLT M10X65 UNI 5931	8
41-kit 150-151	802058302	SUPER "U" PACKING DIA. 18-28	3
42-kit 268-269	802300202	SCRAPER RING	3
44-kit 181	070081512	VALVE CAP	6
44-kit 212	070201512	VALVE CAP G.1/4" (OPTIONAL)	6
45	862415602	BOLT M6X55 DIN 6921 INOX	3
48	843620052	COPPER WASHER	3
50	060123612	SHEET	1
51	089829973	MOUNTING RAILS KIT (OPTIONAL)	1
55	863212002	BOLT M10X20 UNI 5931	4
56	080053612	MOUNTING RAIL (OPTIONAL)	2
57	806534002	TAB 8X7X35	1
59-kit 209	080251542	ANTIEXTRUSION RING 22X17,5	6
REPAIR KIT	NO.s INCLUDED	PCS.	
kit 181	079846973	SPARE PARTS KIT	12
kit 146	089816973	SPARE PARTS KIT	3
kit 210	089839973	SPARE PARTS KIT	10
kit 209	089838973	SPARE PARTS KIT	18
kit 268	089830973	SPARE PARTS KIT	28
kit 269	089831973	SPARE PARTS KIT	22
kit 212	089841973	SPARE PARTS KIT	2