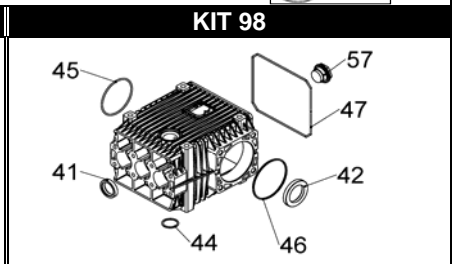
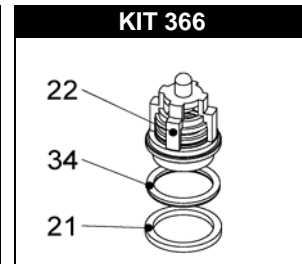
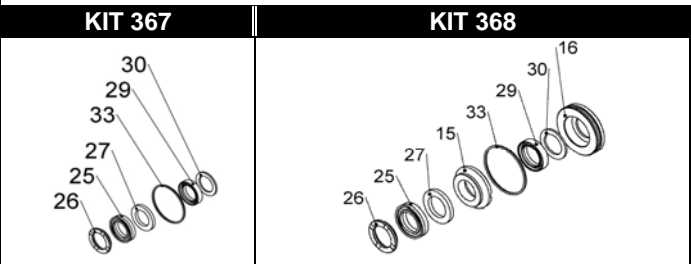
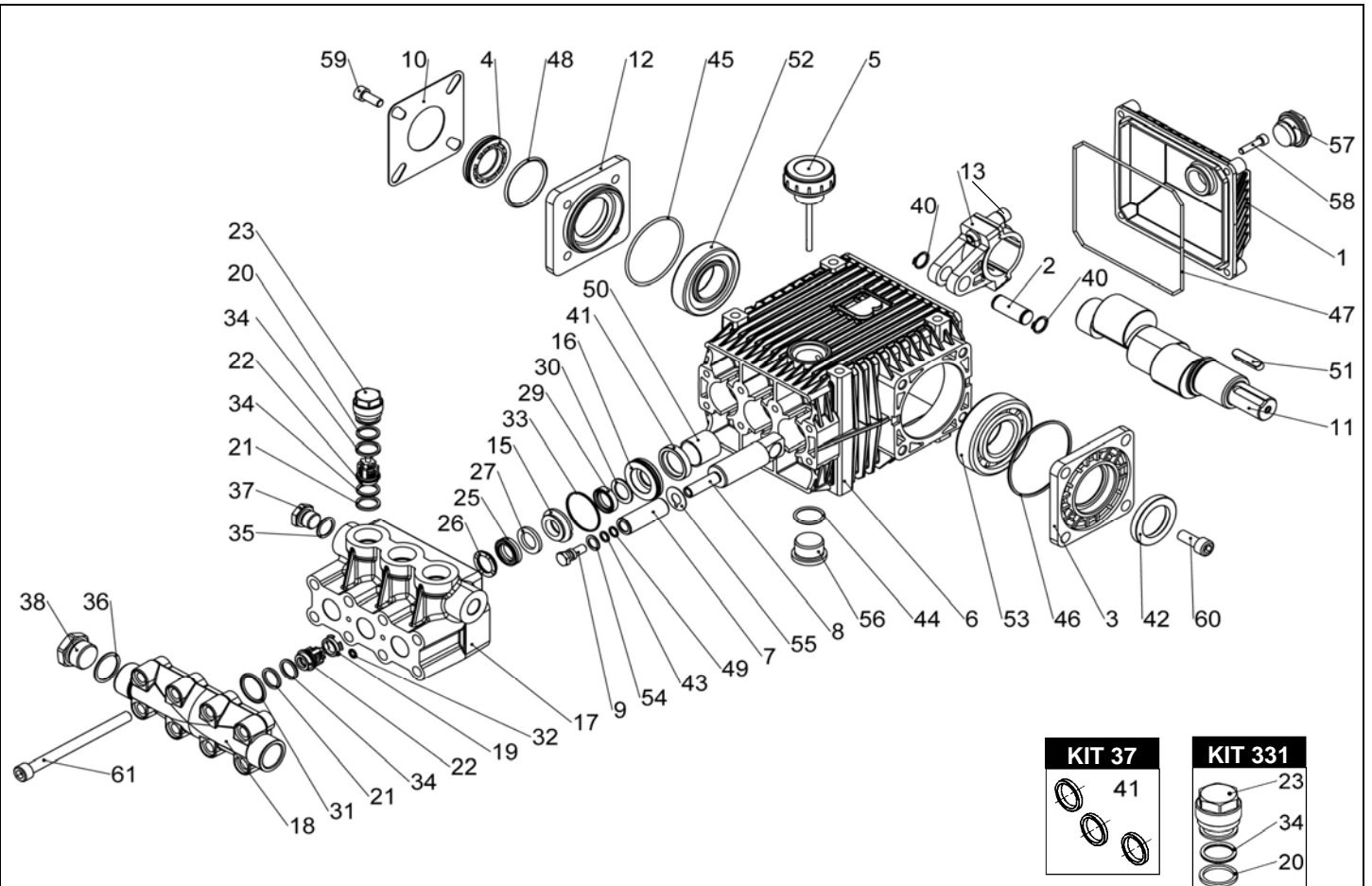


# KTL 1550 - 1750 - 2050



POS.	CODICE PART NO RÉF.	DENOMINAZIONE - DESCRIPTION - DESCRIPTION	Q.TY
1	060006092	COVER	1
2	060007492	PISTON PIN DIA.15 MM	3
3	060017092	BEARING COVER DIA.80 MM	1
4	060019322	OIL SIGHT GLASS	1
5	060020322	OIL FILLER PLUG WITH DIP STICK	1
6	060021092	PUMP CRANKCASE	1
7	060055182	CERAMIC PISTON DIA.18 MM	3
8	060065512	PLUNGER ROD	3
9	060073512	PISTON BOLT	3
10	060123612	SHEET FOR OIL SIGHT LOCKING	1
11	060163262	CRANKSHAFT KTL 1550	1
11/1	060164262	CRANKSHAFT KTL 1750	1
11/2	060165262	CRANKSHAFT KTL 2050	1
12	060260092	BEARING COVER DIA.72	1
13	862796002	CONNECTING ROD BOLT	6
13	069800972	CONNECTING ROD	3
15-KIT 368	060215532	FRONT GLAND	3
16-KIT 368	060216532	BACK GLAND DIA.20 MM	3
17	060265282	PUMP HEAD KTL 500	1
18	060266282	SUCTION MANIFOLD KTL 500	1
19	060267282	VALVE SUPPORT KTL 500	3
20-KIT 331	080250542	ANTI-EXTRUSION RING D. 22,4X18,4X2 MARR.	3
21-KIT 366	080251542	ANTI-EXTRUSION RING D. 22X17,5X2 MARR.	6
22-KIT 366	089837973	VALVES ASSEMBLY	6
23-KIT 331	180011532	VALVE CAP	3
25-KIT 367-368	802058002	ANELLO TEN. SUPER "U" D.18X28 NERO	3
26-KIT 367-368	802058102	THRUST RING SUPER "U" D.18	3
27-KIT 367-368	802058202	ANTI-EXTRUSION RING D.18X28X3 MARRONE	3
29-KIT 367-368	802300102	"U" PACKING D.18X26X5,5/3	3
30-KIT 367-368	802300202	SCRAPER RING D.17,75X26X1,5	3
31	803205502	O-RING D.2,62X26,65	2
32	803050002	O-RING D.1,78X6,07	3
33-KIT 367-368	803080202	O-RING D.1,78X37,82	3
34-KIT 331-366	803182802	O-RING D.2,62X17,13	1
35	824109002	COPPER GASKET DIA.17X22X1	9

POS.	CODICE PART NO RÉF.	DENOMINAZIONE - DESCRIPTION - DESCRIPTION	Q.TY
36	824180002	COPPER GASKET D.26,3X32X1	1
37	852579532	PLUG G 3/8 BRASS	1
38	852693532	PLUG G3/4 BRASS	1
40	801099002	CIRCLIP DIA.15	6
41-KIT 37 - 98	802090002	OIL SEAL 24X35X7	3
42-KIT 98	802143002	OIL SEAL 35X52X7	1
43	803055002	O-RING D.1,78X7,76	3
44-KIT 98	803204802	O-RING D.2,62X23,81 (90 SHORE)	1
45-KIT 98	803210552	O-RING D.2,62X67,95	1
46-KIT 98	803210642	O-RING D.2,62X75,87	1
47-KIT 98	803210902	O-RING D.2,62X152	1
48	803262002	O-RING D.3,53X41,28	1
49	803912002	ANELLO BKC 11X8,1X1,5 PTFEG416T	3
50	804300002	SELF-LUBRIFICATING BUSHING	3
51	806534002	TAB 8X7X35	1
52	812848002	ROLLER BEARING DIA.35X72X17	1
53	812870002	ROLLER BEARING DIA.35X80X21	1
54	843655002	COPPER WASHER D.11,2X16,6X1	3
55	843826002	COPPER WASHER D.11,3X25X0,5	3
56	852687002	PLUG G 3/4	1
57	853515502	OIL SIGHT GLASS	1
58	862216002	BOLT M6X25 UNI5931	4
59	862683002	BOLT M8X25 UNI5931	4
60	863265002	BOLT M10X25 UNI 5931	4
61	864402002	BOLT M10X130 UNI 5931	8
REPAIR KIT		ITEM NO.s INCLUDED	PCS.
KIT 37	069814973	SPARE PARTS KIT	3
KIT 98	069842973	SPARE PARTS KIT	9
KIT 331	189807973	SPARE PARTS KIT	3
KIT 366	069820973	SPARE PARTS KIT	18
KIT 367	069873973	SPARE PARTS KIT	21
KIT 368	069875973	SPARE PARTS KIT	27