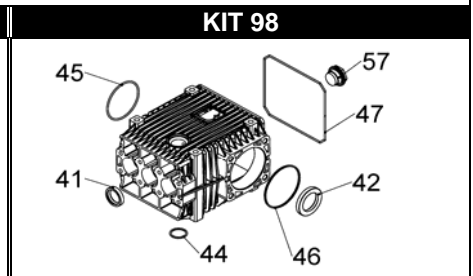
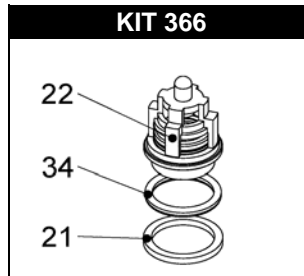
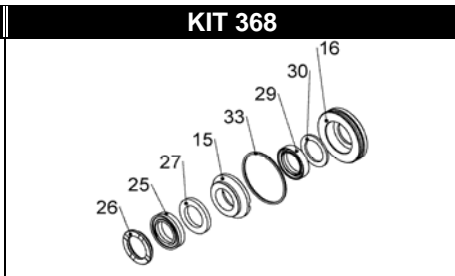
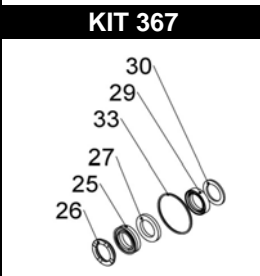
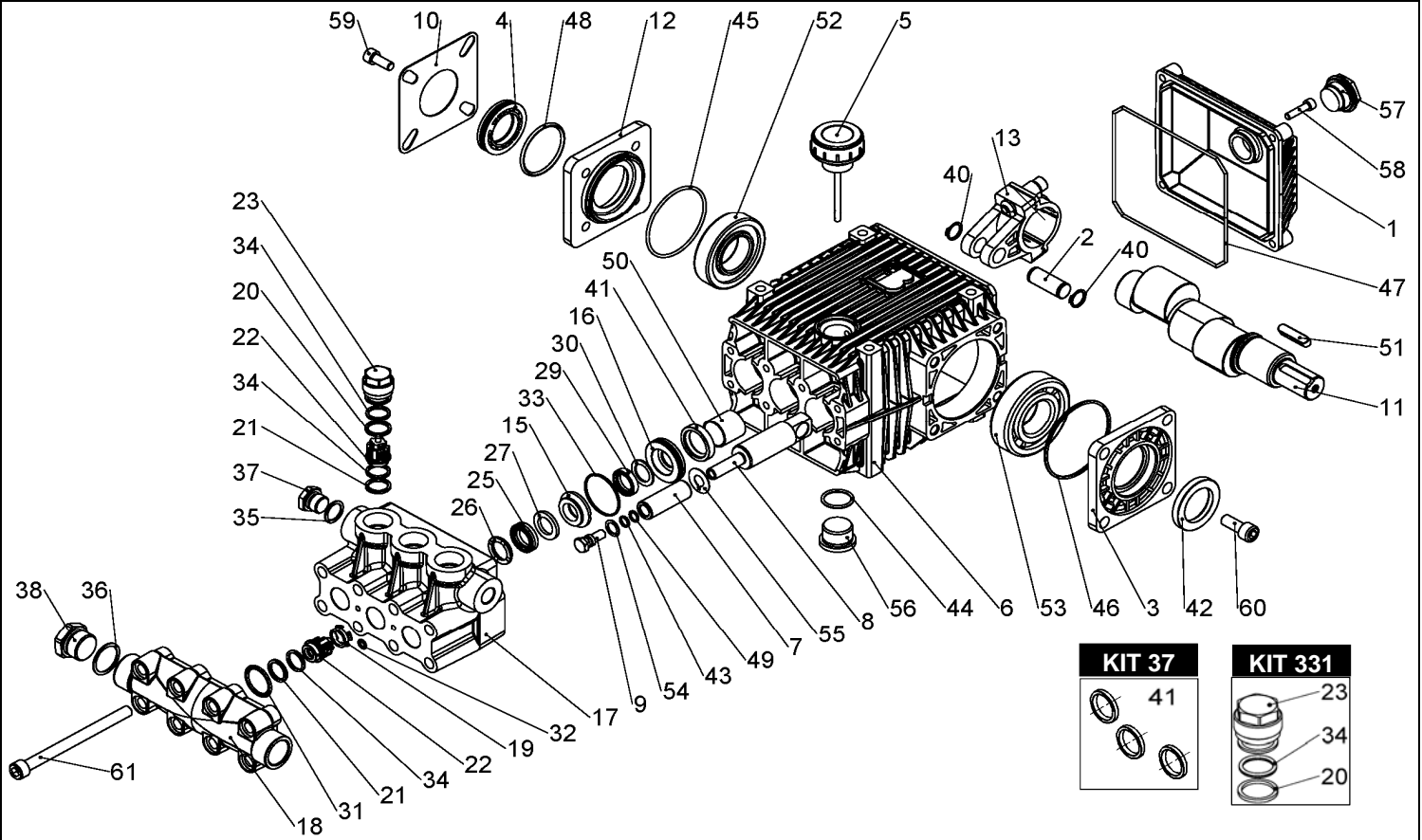


KTL 2250



POS.	CODICE PART NO RÉF.	DENOMINAZIONE - DESCRIPTION - DESCRIPTION	Q.TY
1	060006092	COPERCHIO POST. ALTO X CARTER	1
2	060007492	SPINOTTO BIELLA D.15	3
3	060017092	COPERCHIO CUSCINETTO D.80	1
4	060019322	SPIA LIV.OLIO	1
5	060020322	TAPPO CARICO OLIO CON ASTA	1
6	060021092	CARTER POMPA SERIE KKL (FRESATO)	1
7	060055182	PISTON. CER. D.18X50	3
8	060065512	GUIDA PISTONE HD-TTL-KTL DIA.18	3
9	060073512	VITE SPEC. M8 SERRAGGIO PIST.HD	3
10	060123612	LAMIERINO BLOCCAGGIO SPIE	1
11	060165262	ALBERO KTL 2250	1
12	060260092	COPERCHIO CUSC. D.72 OPP. COMANDO	1
13	862752002	VITE BIELLA	6
13	843652002	ROSETTA	6
13	060189112	ASSIEME BIELLA	3
15-KIT 368	060215532	LANTERNA ANTERIORE D.18	3
16-KIT 368	060216532	LANTERNA POSTERIORE D.18-W2	3
17	060265282	CORPO POMPA KTL 500	1
18	060266282	COLLETTORE ASPIRAZIONE KTL 500	1
19	060267282	RONDELLA APPOGGIO VALVOLA KTL 500	1
20-KIT 331	080250542	ANELLO ANTIESTR. 22,4X18,4X2 MARR.	3
21-KIT 366	080251542	ANELLO ANTIESTR. 22X17,5X2 MARR.	6
22-KIT 366	089837973	GRUPPO VALVOLA A/M	6
23-KIT 331	180011532	TAPPO VALVOLA 27X1,5	3
25-KIT 367-368	802058002	ANELLO TEN. SUPER "U" D.18X28 NERO	3
26-KIT 367-368	802058102	ANELLO DI SPINTA SUPER "U" D.18	3
27-KIT367-368	802058202	ANELLO ANTIESTR. 18X28X3 MARRONE	3
29-KIT367-368	802300102	GUARNIZIONE A U D.18X26X5,5/3	3
30-KIT367-368	802300202	ANELLO PULITORE D.17,75X26X1,5	3
31	803205502	ANELLO OR D.2,62X26,65	3
32	803050002	ANELLO OR 1,78X6,07	2
33-KIT 367-368	803080202	ANELLO OR D.1,78X37,82	3
34-KIT 331-366	803182802	ANELLO OR 2,62X17,13 (90 SH)	9

POS.	CODICE PART NO RÉF.	DENOMINAZIONE - DESCRIPTION - DESCRIPTION	Q.TY
35	824109002	GUARNIZ. D.17X22X1 RAME RICOTTO	1
36	824180002	GUARNIZIONE D.26,3X32X1 RAME	1
37	852579532	TAPPO TE G.3/8" OTTONE	1
38	852693532	TAPPO TE G.3/4" OTTONE	1
40	801099002	ANELLO ELS D.15 PER ALBERO	6
41-KIT 37 - 98	802090002	ANELLO RADIALE 24X35X7	3
42-KIT 98	802143002	ANELLO RADIALE 35X52X7	1
43	803055002	ANELLO OR 1,78X7,76	3
44-KIT 98	803204802	ANELLO OR 2,62X23,81 (90 SHORE)	1
45-KIT 98	803210552	ANELLO OR D.2,62X67,95	1
46-KIT 98	803210642	ANELLO OR D.2,62X75,87	1
47-KIT 98	803210902	ANELLO OR D.2,62X152	1
48	803262002	ANELLO OR 3,53X41,28	1
49	803912002	ANELLO BKC 11X8,1X1,5 PTFEG416T	3
50	804300002	BOCCOLA AUTOLUBRIFICANTE 2425	3
51	806534002	LINGUETTA 8X7X35	1
52	812848002	CUSCINETTO RULLI CIL.35X72X17 NJ207	1
53	812870002	CUSCINETTO RULLI CIL.35X80X21 NJ307	1
54	843655002	ROSETTA RAME D.11,2X16,6X1	3
55	843826002	ROSETTA D.11,3X25X0,5 RAME RIC.	3
56	852687002	TAPPO TCEI G.3/4" DIN908 ZINCATO	1
57	853515502	SPIA LIV.OLIO+OR(EX 85350600)	1
58	862216002	VITE TCEI M6X25 UNI5931 ZINCATA	4
59	862683002	VITE TCEI M8X25 UNI5931 8G ZINC.	4
60	863265002	VITE TCEI M10X25 UNI 5931 ZINCATA	4
61	864402002	VITE TCEI M10X130 UNI.5931 DACROMET	8
REPAIR KIT		ITEM NO.s INCLUDED	PCS.
KIT 37	069814973	KIT RICAMBI	3
KIT 98	069842973	KIT RICAMBI	9
KIT 331	189807973	KIT RICAMBI	3
KIT 366	069820973	KIT RICAMBI	18
KIT 367	069873973	KIT RICAMBI	21
KIT 368	069875973	KIT RICAMBI	27